

Anchor 1 ANGUS

18th Annual Bull Sale



A†

Saturday, APRIL 12, 2025

2:00 PM at the Geinger Farm

South of Mayerthorpe, AB

A†

Greetings from our team at Anchor 1 Angus

Hello, and welcome everyone to our exciting, upcoming, 18th annual spring bull sale. Our Anchor 1 Angus family and crew hope that this past year has been good to all of you. We sincerely appreciate all of our past bull customers. We are truly blessed to be doing business with what we believe are some of the most genuine and humble people in the world of agriculture. Our passion for raising quality angus cattle burns brighter each year, and it is our amazing and loyal customer base that fuels the fire in our hearts.

It is with great pride that we introduce to you our elite 2025 bull sale offering. We truly feel that we have put forth a strong set of powerful, attractive and consistent young herdsires with marketability as a top priority. Rest assured that we are extremely selective when it comes to our cow herd and only the most correct, quiet and consistent producers are raising the bulls that we provide for your programs moving forward.

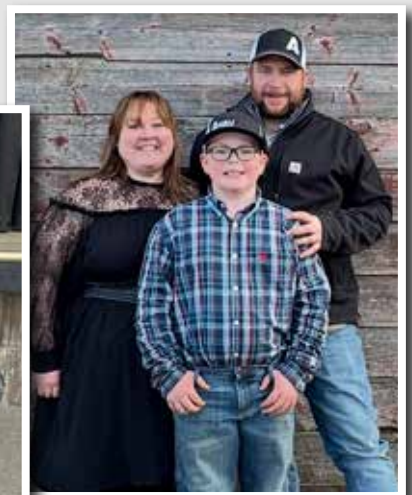
This year you can expect to see tremendous hair coats, and solid breeding conditions on both the yearling bulls as well as the 2 year olds. We have been focused on bringing in strategic new bloodlines over the years to cross with proven purchased and home raised genetics. As a result, we have found that our cowherd continues to raise the bar toward greatness and it is shining through in the offspring that stands before you in this catalog. The feet of our sale bulls have NEVER been trimmed, what you see is all natural from the ground up.

Our family is growing rapidly and all of the kids are starting to develop personalities and ambitions of their own. With almost all of our children involved in activities like sports, dance and 4-H it keeps us going steady and helps us fill up our spare time (lol). Luckily we have a great crew of dedicated and ambitious employees and friends that make what we do possible, Alex, Joe, Xandra, Emily, Cole, Cory, Keagan, Jordan, Tyler and Tayden. Thank you for the hard work and dedication that you put into the day to day tasks as well as the extra work you put in to help us get the bulls ready for the sale. Our cattle appreciate the way that you have all learned to care for and handle them.

Bid with confidence on sale day and know that we stand behind our bulls to the fullest. If you have any issues or concerns we want to hear from you and make it right moving forward. Our highest honour is hearing how well our bulls have worked in other programs all over the province, but it is our top priority to help customers with problems and to ensure our customers are satisfied and have a great experience dealing with us every time.

Please call with any questions you may have about the bulls or stop by anytime over the next few weeks. Our open house viewing of the bulls will take place at the farm, Thursday, April 10, 2025, which is 2 days prior to our bull sale. Bulls will be penned up in sire group formation for easy and efficient viewing from 10am-7pm. All the best with your 2025 herd bull selections and we look forward to seeing you and visiting with you this spring!

Thanks, from all of us at Anchor 1 Angus



Anchor 1 ANGUS

18th Annual Bull Sale

Open House at the Bull Yard - Thursday, April 10, 10 am - 7 pm
The bulls will be penned up for easy viewing

SATURDAY, APRIL 12, 2025

Live and Online Video Sale with DLMS at 2 pm

Sale Day Phones:

| | |
|-------------------------|--------------|
| Kyle Geinger Cell..... | 780.269.0053 |
| Shane Benson Cell..... | 780.517.1152 |
| Kevin Geinger Cell..... | 780.902.8306 |
| Deerlodge Hall..... | 780.786.4374 |
| Karen Geinger Cell..... | 780.785.8262 |

Sales Staff:

| | |
|---|--------------|
| Auctioneer: | |
| Ryan Dorran..... | 403.507.6483 |
| Ringman | |
| Bryon Wolters | 780.581.8396 |
| Craig Flewelling | 403.556.0515 |
| Online Internet Bidding | |
| DLMS | 780.699.5082 |
| Insurance - Canadian Farm Insurance Corp. | |
| Jill Wildman..... | 780-305-1146 |

Live Online Video Auction:

We are Extremely Grateful and Excited to once again invite you all to join us at the Farm on Sale Day to view our bulls and take in the Live Video Sale at Deer Lodge Hall as we have done in the past.

As usual you may come and view the bulls anytime, but we are having an open house at the bull yard **Thursday April 10, from 10 am. to 7 pm.** The bulls will be penned up that day as well and you may see them and have a visit with us.

Can't make it to the sale?
Internet Bidding Available.

To view this sale visit www.dlms.ca, Fill out the registration form located under registration and sign-up for your free user account and select a username and password.


BIDDERS - To be approved as a bidder, Log in to dlms.ca and click BUYER APPROVAL tab, select the sale you are interested in bidding at and click sign up.

For more information
Call DLMS Reps:
Mark Shologan - 780-699-5082 or
DLMS Purebred Team 780.991-3025

DLMS
www.dlms.ca

Local Accommodations:

| | |
|-----------------------------|--------------|
| Mayerthorpe 15 minute drive | |
| Haven Inn Motel | 780.786.2231 |
| Whitcourt 40 minute drive | |
| Super 8 Motel..... | 780.778.8908 |
| Western Budget Inn..... | 780.706.2030 |
| Green Gables Inn..... | 780.778.4537 |
| Sangudo 25 minute drive | |
| Riverside Motel | 780.785.3738 |

 **Anchor 1 Angus**
The Geingers
Box 1084
Mayerthorpe, AB TOE 1N0
Ph: (780) 269-0053

Health & Fertility:

All bulls will have a scrotal measurement, vet examination and have passed a semen test prior to the sale. All veterinary work will be completed by Barr-North Veterinary Services Dr. Jason Schonknecht, Barrhead, AB (780) 674-2100.

100% Guarantee:

All bulls are guaranteed to be satisfactory breeders in accordance with CAA guidelines. Should a problem occur, barring physical injury or mismanagement, a bull of equal value will be provided or a credit will be issued towards the purchase of another bull. We guarantee you will have a bull to service your cows.

Bull Development & Delivery:

Option A: Bulls can be picked up at the farm sale day. We will be offering a \$100 discount off each bull picked up at the farm from April 12, 2025 to April 30, 2025.

Option B: At the buyer's option and risk, the bulls can stay at Anchor 1 and will be delivered within 500 km of Mayerthorpe. We will do our utmost to deliver them right to your yard. This will be done at the convenience of Anchor 1.

Option C: Anchor 1 will keep the bulls free of charge until May 1st. At this time the buyer must pick up bulls from the farm.

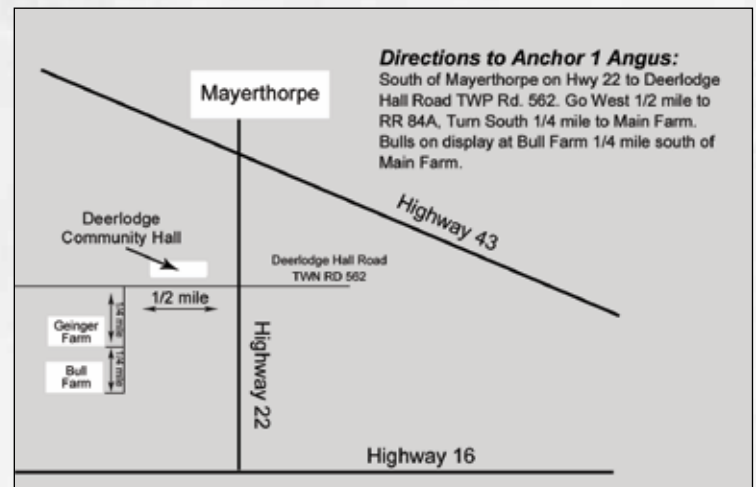
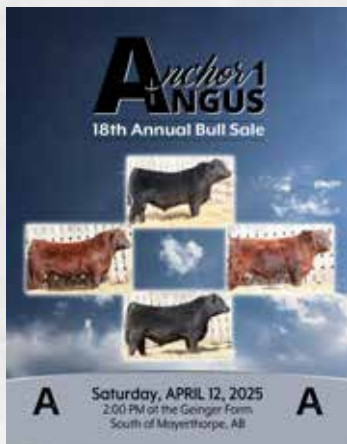
ALL BULLS STAYING AT ANCHOR 1 MUST BE INSURED.

Volume Buyer Discount:

- 2 Bulls . . . 2% discount
- 3 Bulls . . . 3% discount
- 4 Bulls . . . 4% discount
- 5 Bulls and over . . . 5% discount

Catalogue Information & Announcements

Missing EPD information and pending registrations will be posted on www.anchor1angus.com as soon as the Angus Assoc. makes them available.



*View Sale Catalog & Videos Online at:
www.anchor1angus.com*

Calving Ease Scores



- ★★★★ Recommended for heifers
- ★★★ Recommended for well developed heifers & young cows
- ★ Recommended for cows



RED RAINBOW HEADSTRONG 65J DWBN 65J 2224033
RED U2 HEADSTRONG 273G X RED HAZEL BLUFF MELTE 105E

| EPD | BW | WW | YW | MILK | CE | MCE | BW | AWW | AYW |
|------|----|----|----|------|------|-----|-----|------|-----|
| -3.0 | 52 | 90 | 24 | 13.0 | 10.0 | 72 | 785 | 1210 | |

- Headstrong sons, hands down, **Highlight** our red angus division this year
- Headstrong is a **True Calving Ease Bloodline**, with CE scores well into the positive double digits
- Loaded with style, his offspring arrive effortlessly and **perform with the best**
- Headstrong sons will be a **hot topic** sale day, don't miss your chance to own 1
- We loved this bull's mother so much when we saw her that we went to the Rainbow Red Angus Dispersal and bought her



RED SSS TYCOON 225E DYLN 225E 2002956
RED LSF SRR TYSON 3125A Z RED SSS VALENTINE 335Z

| EPD | BW | WW | YW | MILK | CE | MCE | BW | AWW | AYW |
|------|----|-----|----|------|------|-----|-----|------|-----|
| -2.5 | 60 | 107 | 22 | 13.0 | 12.0 | 77 | 785 | 1334 | |

- Tycoon has been **heavily used** in the red angus breed over the past 5 years
- His offspring display attraction, consistency and Marketability
- **Big Time Growth**, from birth to weaning time and they gain well on feed also
- We have been so impressed with our Tycoon calves that we retained a son last year to **continue his legacy**
- Keep your eyes opened for sons from Red Anchor 1 Tycoon 52K as you scroll through our catalog this year



RED ANCHOR 1 TYCOON 52K RKKG 52K 2303502
RED SSS TYCOON 225E X RED ANCHOR 1 MAX-FLAME 161B

| EPD | BW | WW | YW | MILK | CE | MCE | BW | AWW | AYW |
|-----|----|----|----|------|------|-----|-----|------|-----|
| 0.1 | 53 | 94 | 23 | 8.0 | 13.0 | 72 | 700 | 1174 | |

- If you like the Red SSS Tycoon sons, take a good look at his grandson's
- Tycoon 52K embodies much of his sires great characteristics
- Anchor 1 Tycoon 52K is **extremely easy keeping** and his calves will pound the scales in the fall
- His dam 161B, is 1 of the most **beautiful & powerful** cows to ever walk our pastures at Anchor 1 Angus, and can still be easily found here today



RED U2Q WORKING CLASS 59H CUA 59H 2149852
RED U2 BLUE COLLAR 295E X RED U-2 MISTY 350C

| EPD | BW | WW | YW | MILK | CE | MCE | BW | AWW | AYW |
|------|----|----|----|------|-----|-----|-----|------|-----|
| -1.1 | 29 | 44 | 27 | 7.0 | 7.0 | 82 | 762 | 1301 | |

- Working Class is a **lights out calving ease sire**, with added style and performance
- Standing on fantastic foot and leg structure, Working Class will surely benefit our herd in the years ahead
- Working Class sons **will work great on your replacement heifers**
- Cherry red, long, smooth and stylish offspring



RED DUFF RED BLOOD 18114 IMP 18114F 2135887
RED ROJAS RIOJA 6052 X DUFF JUANADA 927K 15124

| EPD | BW | WW | YW | MILK | CE | MCE | BW | AWW | AYW |
|------|----|----|----|------|-----|-----|----|-----|-----|
| -1.3 | 43 | 66 | 30 | 8.0 | 4.0 | - | - | - | |

- Red Blood is an **outstanding** American raised Red Angus AI sire
- This bull is currently at the top of his game producing great Red Angus genetics **across the globe**
- He displays all of the great traits we as breeders look for when selecting exciting new sire's to further progress our programs
- Take a good look at the 2 sons in our offering, they are **Elite Standouts**



RED TER-RON KINGSTON 79K RPAH 79K 2269701
RED U2 GENESIS 103G X RED TER-RON REBECCA 97G

| EPD | BW | WW | YW | MILK | CE | MCE | BW | AWW | AYW |
|-----|----|----|----|------|-----|-----|-----|------|-----|
| 1.0 | 53 | 95 | 26 | 0.0 | 4.0 | 82 | 757 | 1322 | |

- Sired by the **well known** Red U2 Genesis 103G
- We purchased Kingston to add another high performance, calving ease sire to our roster
- **Extremely quiet disposition**, Kingston certainly sired a uniform set of calves
- We will be seeing a **positive impact** from this bull in the years ahead



RED KC KING BEAU 46G CGD 46G 2136665
RED K-C KING OF SCOTS 87E X RED K-C MISS DI 46E

| EPD | BW | WW | YW | MILK | CE | MCE | BW | AWW | AYW |
|-----|----|----|----|------|-----|-----|-----|-----|-----|
| 3.2 | 42 | 69 | 16 | -2.0 | 3.0 | 78 | 713 | - | |

- King Beau is a **unique Herd Sire** that we selected to add length and frame size into our cow herd
- His offspring display a deep, **blood red attractive color**, often along with a dark face
- King Beau is long, smooth and athletic
- This fellow does a fantastic job combining **calving ease with performance**



RED YCLC MOONSHINE 55F YCLC 55F 2066852
RED RSL MOONSHINE 207D X RED YCLC KURUBA 849D

| EPD | BW | WW | YW | MILK | CE | MCE | BW | AWW | AYW |
|-----|----|----|----|------|------|-----|-----|------|-----|
| 0.4 | 53 | 83 | 23 | 10.0 | 10.0 | 70 | 623 | 1145 | |

- **Moonshine left his mark on our program in a big way**
- Our customers who have purchased Moonshine sons over the years have been beyond satisfied with the calving ease and performance results
- We have only just scratched the surface with Moonshine as his gorgeous, highly productive young daughters are well on their way to raising the standard of excellence in our herd.
- **Very solid and consistent performance from this bloodline**



RED U2 MERLOT 266F DUA 266F 2042172
RED U-2 RECKONING 149A X RED U-2 MABEL 60A

| EPD | BW | WW | YW | MILK | CE | MCE | BW | AWW | AYW |
|-----|----|----|----|------|-----|-----|-----|------|-----|
| 1.6 | 44 | 76 | 27 | 0.0 | 6.0 | 73 | 746 | 1471 | |

- \$16,000 herd bull that we purchased from U2 Ranch
- Merlot has greatly contributed to helping take our herd to another level
- **Bull calves are stamped with his strong, mature, masculine qualities**
- Strong maternal value in the Merlot sons



Black Angus Reference Sires



GRASS ROOTS CROSSFIRE 106 RVR 106J 2209043
HF CROSSFIRE 280D X S A V MADAME PRIDE 8134

| EPD | BW | WW | YW | MILK | CE | MCE | BW | AWW | AYW |
|-----|----|----|----|------|-----|-----|----|-----|-----|
| 0.5 | 47 | 81 | 22 | 10.0 | 5.0 | 70 | - | - | - |

- Crossfire sons will once again highlight our Black Angus Division this year
- Crossfire consistently sires marketable offspring that are born easy and perform at the top of the pen, **He is a gem in our herd bull roster**
- He stamps his sons with true uniformity, and he crosses well with all shapes and sizes of cows
- The females entering our program from his lineage are beautiful and will prove their importance over the coming years
- **If you are looking for a rock solid heifer bull this year, let a Crossfire son get the job done for you**



BAR E-L CHECKMATE 71K YHB 71K 2272171
HF PORTRAYAL 67H X BAR E-L BLACKBIRD 50H

| EPD | BW | WW | YW | MILK | CE | MCE | BW | AWW | AYW |
|-----|----|-----|----|------|-----|-----|-----|------|-----|
| 4.0 | 62 | 105 | 38 | -1.0 | 2.0 | 88 | 844 | 1410 | - |

- Dave put us on to Checkmate 71K back in his 2023 bull sale and we haven't looked back since
- **Checkmate is an all around stud that does everything properly**
- This powerhouse moves like a cat and is correct and solid from the ground up
- **Checkmate sons are Feature standouts in are pen this year**
- **Maternal Quality at its highest standard**
- Checkmate will continue to service cows here for many years to come



LFE BEST ANSWER 800H LFE 800H 2237628
S A V FINAL ANSWER 0035 X LFE BA CHINOOK 627F

| EPD | BW | WW | YW | MILK | CE | MCE | BW | AWW | AYW |
|------|----|-----|----|------|-----|-----|-----|------|-----|
| -0.3 | 63 | 109 | 37 | 8.0 | 9.0 | 75 | 873 | 1475 | - |

- Sired by the legendary SAV Final Answer 0035
- **Best Answer sons are early maturing, powerful meat machines**
- Our Best Answer sons are really going to weigh up on sale day
- Uniformity and marketability in a very consistent calf crop
- **Females from Best Answer are outstanding as well**



YOUNG DALE GINKS 36G YDF 36G 2091668
YOUNG DALE YOHAN 18E X LLB JEMINA 0334E

| EPD | BW | WW | YW | MILK | CE | MCE | BW | AWW | AYW |
|------|----|----|----|------|------|-----|-----|------|-----|
| -0.6 | 68 | 93 | 12 | 12.0 | 10.0 | 78 | 829 | 1205 | - |

- **As a yearling, Ginks was the most impressive bull to ever step foot on our farm**
- He didn't cost us a whole lot but he was structurally correct and so stylish
- Proven calving ease bull, that is a tremendous asset to our program
- Ginks stamps his calves with a beautiful skull shape and very gentle disposition
- **Another outstanding group of yearling bulls sired by Ginks this year**
- Keep every daughter home from these Ginks sons



EVERBLACK FULL DRAW BRAVO 65J JZT 65J 2242216
U2 ACCLAIM 144G X KUEBER ROSEBUD 9G

| EPD | BW | WW | YW | MILK | CE | MCE | BW | AWW | AYW |
|------|----|----|----|------|-----|-----|-----|-----|-----|
| -0.1 | 45 | 82 | 26 | 9.0 | 8.0 | 78 | 726 | - | - |

- Purchased as a 2 year old from Everblack & Full Draw
- Bravo sons are moderate framed, fleshy & consistent with great hair
- **Bravo sons will work nicely on your replacement heifers**
- **Bravo's dam is an ideal angus female**



ANCHOR 1 TRIUMPH 135K RKKG 135K 2280431
COLEMAN TRIUMPH 9145 X HF BLACKWOOD LADY 46Y

| EPD | BW | WW | YW | MILK | CE | MCE | BW | AWW | AYW |
|-----|----|-----|----|------|-----|-----|-----|-----|-----|
| 3.4 | 60 | 106 | 21 | 0.0 | 1.0 | 89 | 692 | - | - |

- **Functional and correct, 135K offspring will thrive in the real world**
- Triumph was an outstanding home raised bull that cleaned up our AI cows
- The dams to all of the Triumph sons in this catalog are some of our top producing cows
- **135K is long, smooth and athletically built, his sons will be great breeders**
- His dam 46Y still had a picture perfect udder when we sold her open at 13 years old

Sire - Coleman Triumph 9145



ANCHOR 1 DEFIANCE 129J RKKG 129J 2242452
 YOUNG DALE DEFIANCE 199F X HF QUEENIE 270Y

| EPD | BW | WW | YW | MILK | CE | MCE | BW | AWW | AYW |
|-----|-----|----|-----|------|-----|-----|----|-----|------|
| | 4.8 | 56 | 100 | 24 | 0.0 | 6.0 | 98 | 629 | 1263 |

- 129J is an extremely quiet home raised bull that stands on flawless feet
- Defiance embraces a proud mature skull structure
- Sons are thick made, deep bodied and quiet
- We look forward to seeing what his daughters will offer our program in the years ahead
- Dam is a beautiful, tank of a cow



BROOKING SOONER 0025 JSTN 52H 2141073
 PF OKLAHOMA 6625 X BROOKING ROYAL LASS 8007

| EPD | BW | WW | YW | MILK | CE | MCE | BW | AWW | AYW |
|-----|-----|----|-----|------|-----|------|----|-----|------|
| | 1.8 | 69 | 127 | 17 | 5.0 | -3.0 | 80 | 862 | 1451 |

- Absolutely blown away by our Brooking Sooner calves
- Daughters are pretty fronted, deep bodied and have gorgeous udders
- Son's are attractive, thick made and uniform
- We liked Sooners contributions so much that we retained 1 son to walk our pastures in the coming years
- We are beyond excited to offer fresh genetics like these to our customers that are perfect for today's market



HF TIGER 5T HFDF 5T 1402252
 HF KODIAK 5R X HF ECHO 84R

| EPD | BW | WW | YW | MILK | CE | MCE | BW | AWW | AYW |
|-----|-----|----|-----|------|------|-----|----|-----|------|
| | 0.2 | 57 | 111 | 31 | 11.0 | 6.0 | 76 | 796 | 1338 |

- Tiger 5T no longer needs an introduction, His Legacy speaks for itself
- Every direct Tiger offspring we have had over the years was either a sale feature in our bull sale or a valued addition to our cow herd
- Tiger offspring display calving ease & performance and end up at the top of our pen each year
- With our Tiger semen supply running low, we are proud to mention that the 2025 calving season gave us a direct Tiger son we are extremely excited about.
- Retaining this son in our own program will offer great opportunity for our customers in the years ahead



ANCHOR 1 WHO'S THAT 9C RKKG 9C 1861367
 HF WHO'S THAT 7A X HF FANTASY 364W

| EPD | BW | WW | YW | MILK | CE | MCE | BW | AWW | AYW |
|-----|-----|----|----|------|-----|-----|----|-----|-----|
| | 1.9 | 50 | 96 | 14 | 6.0 | 9.0 | 85 | 689 | - |

- Extremely sound bull that stood on perfect feet until we sold him at 8 years old
- Who's That 9C consistently sires attractive, marketable offspring
- His daughters are some of the most beautiful young cows we have ever owned
- This year will be your final opportunity to own a Who's That son
- 9C bred so well over his time, only 2 two year olds on offer this year



ANCHOR 1 THOR 49F RKKG 49F 2048542
 ANCHOR 1 THOR 42A X HF ROSEBUD 332Y

| EPD | BW | WW | YW | MILK | CE | MCE | BW | AWW | AYW |
|-----|-----|----|----|------|-----|------|----|-----|-----|
| | 1.1 | 42 | 57 | 16 | 7.0 | 10.0 | 89 | 678 | - |

- Highly functional, extremely sound Thor son
- 49F is keeping the proven Thor traits alive and strong within our herd
- Dam is as good as ever at 14 years old and calved 1st cycle once again this year
- Thor 49F will sire real life, low maintenance cattle



Always remembered

In Memory "of a true friend" Kyle Hoefels

This past December, a young farmer was taken from this life into the next and it left an entire community in a state of devastation and sadness. Kyle Hoefels was loved by everyone who had the opportunity to know him, and his smile touched the lives of many more. Kyle & Kristina Hoefels were living a beautiful life, raising their family and building their dream on the farm, when Kyle was tragically taken from them in a farming accident.

To us, at Anchor 1 Angus, Kyle and Kristina were known as hardworking, honest & pure, salt of the earth kind of people. Ambition and passion fuelled their lives and their dream to raise children on the farm. We started out as acquaintances, always enjoying each other's company, but our relationship evolved over the years.

Kyle and Kristina started coming to our bull sale annually to check out our genetic offering and it didn't take long for us to develop a lifelong friendship with the Hoefels' family. They were truly loyal customers that had so much faith in our program that soon they started bringing their friends and neighbours to our sale and from that we gained more friends and loyal customers. Kyle and Kristina purchased numerous bulls from our program over the past decade or more.

Kyle and Kristina had a gift that brought people together, they were indeed a special couple. We will forever miss visits before our bull sale and playing baseball with the talented couple, but mostly we will miss Kyle's contagious laugh and his smile that could light up a room. Kyle was a special soul, a man of true integrity. We still look forward to the time we will spend in the years to come with Kristina and the kids and we will watch their amazing legacy grow, just as Kyle will from the sky above.

On behalf of all our family at Anchor 1 Angus it is our pleasure to offer one of our top registered Black Angus open heifer calves in our 2025 bull sale as a donation lot in honour of a true friend and a pillar of his community. All proceeds will go to the Hoefels family as Kristina has plans to keep the cows as her ambition and passion still glows, with Kyle's loving presence surrounding her always and helping her along the way.

SCHIEFELBEIN SHOWMAN 338
 HF PORTRAYAL 67H
 HF TIBBIE 73D

BAR-E-L CHECKMATE 71K

HF ALCATRAZ 60F
 BAR-E-L BLACKBIRD 50H
 BAR-E-L BLACKBIRD 63U

BARSTOW CASH
 BROOKING CASH ADVANCE 8120
 E A ROSE 918

ANCHOR 1 ANNIE 50H

MJT EXTRA 209B
 ANCHOR 1 ANNIE 11F
 ANCHOR 1 ANNIE 331D



LOT 1

ANCHOR 1 ANNIE 138M

RKKG 138M 2364164 February 23 2024

| EPD | BW | WW | YW | MILK | CE | MCE | BW | Adj WW | Adj YW |
|-----|-----|----|-----|------|-----|-----|----|--------|--------|
| | 2.6 | 61 | 105 | 31 | 3.0 | 6.0 | 80 | 661 | n/a |

Donation Heifer "Terms & Conditions"

- Anchor 1 Annie 138M will lead off our 2025 Bull Sale
- She Sells Outright with Registration Papers to the highest bidder
- Catalog info and video available on our website "anchor1angus.com"
- All Proceeds will go to Kristina Hoefels and her 3 beautiful children

Straight off the top of our 2025 replacement heifer pen, Annie 138M is a sweetheart of a heifer with a fantastic disposition. She is soft made, deep bodied and extremely attractive. 138M's foot quality and teat placement is flawless at her age. Sired by the \$16,000 Bar-E-L Checkmate bull that we purchased in spring 2023. Annie's paternal brothers will highlight our bull sale April 12,2025. Annie's young dam is beautiful in her makeup and earned herself a spot in our AI program this spring where she will have the chance to be mated to one of the very exciting new semen packages we purchased this winter. We are extremely grateful to be able to offer a heifer of this caliber in Kyle's honour, as he always liked to chase top performing bulls at our auction each year. Big time show heifer prospect for the upcoming summer show season.

2M

ANCHOR 1 CROSS FIRE 2M

RKKG 2M 2363830 January 17 2024

BAR-H CROSSFIRE 63A
 HF CROSSFIRE 280D
 HF RUBY 10B

GRASS ROOTS CROSSFIRE 106

COLEMAN CHARLO 0256
 S A V MADAME PRIDE 8134
 S A V MADAME PRIDE 6660

HF WHO'S THAT 7A
 ANCHOR 1 WHO'S THAT 9C
 HF FANTASY 364W

ANCHOR 1 TIBBIE 77K

ANCHOR 1 BULLSEYE 37C
 ANCHOR 1 TIBBIE 98F
 HF TIBBIE 118Y

| EPD | BW | WW | YW | MILK | CE | MCE | CE Score | BW | Adj WW | Adj YW |
|-----|----|----|----|------|----|-----|----------|----|--------|--------|
| | 2 | 56 | 97 | 22 | 6 | 4 | ★★★★ | 73 | 665 | 1087 |

- **Outstanding Crossfire son who is one of Shane's favorites in the pen**
- 2M is long bodied and smooth displaying no shortness of attraction
- The maternal quality that these Crossfire sons hold is 2nd to none
- **2M is a sure bet heifer bull that is worth coming to see in person**





3M ANCHOR 1 BEST ANSWER 3M

RKKG 3M 2407007 January 17 2024

SITZ TRAVELER 8180
S A V FINAL ANSWER 0035
S A V EMULOUS 8145

SOO LINE THOR 1085
ANCHOR 1 THOR 42A
HF TIBBIE 260Y

LFE BEST ANSWER 800H

ANCHOR 1 IDELETTE 29C

COLEMAN BRAVO 6313
LFE BA CHINOOK 627F
LFE BA CHINOOK 2183D

GEIS BALOO 13'08
ANCHOR 1 IDELETTE 4A
SCC IDELETTE 64T

| EPD | BW | WW | YW | MILK | CE | MCE | CE Score | BW | Adj WW | Adj YW |
|-----|------|----|----|------|------|------|----------|----|--------|--------|
| | -0.6 | 57 | 93 | 31 | 10.5 | 11.5 | ★★★★ | 65 | 604 | 1037 |

- 29C is a herd bull factory, cranking yet another new mating out of the park
- 3M is a calving ease specialist backed by powerful performance numbers
- This fellow is average framed, long, smooth and stylish
- 3 star calving ease from this feature Best Answer son



5M ANCHOR 1 TIGER 5M

RKKG 5M 2363854 January 19 2024

SANDY BAR ADVANTAGE 43M
HF KODIAK 5R
WILBAR RUBY 955N

S A V PIONEER 7301
BAR-E-L THE GENERAL 44E
BAR-E-L DUCHESS 53C

HF TIGER 5T

ANCHOR 1 TIBBIE 163G

TC FREEDOM 104
HF ECHO 84R
HFDF ECHO 6N

ANCHOR 1 THOR 42A
ANCHOR 1 TIBBIE 358E
HF TIBBIE 114Z

| EPD | BW | WW | YW | MILK | CE | MCE | CE Score | BW | Adj WW | Adj YW |
|-----|-----|----|-----|------|----|-----|----------|----|--------|--------|
| | 0.8 | 56 | 102 | 24 | 9 | 8 | ★★★★ | 79 | 637 | 1060 |

- Tiger offspring always find a way to rise to the top of their pen
- Long, deep, thick and heavy set would describe 5M
- Tiger is well known for calving ease but what makes him so special is the performance is always elite on his offspring as well
- You will really admire the shape and muscle pattern of 5M
- A heifer bull prospect offering game changing opportunity



6M RED ANCHOR 1 TYCOON 6M

RKKG 6M 2384920 January 19 2024

RED MUSHRUSH IMPRESSIVE CA U23
RED LSF SRR TYSON 3125A
RED LSF JIBA R5009 W9247

RED SAWMILL PACKMAN 7Y
RED FINE LINE PACKER 20B
RED FINE LINE BERTHA 16Z

RED SSS TYCOON 225E

RED ANCHOR 1 VERNICE 87E

RED SSS AMBUSH 771X
RED SSS VALENTINE 335Z
RED SSS VALENTINE 387W

RED BRYLOR RED KODIAK 3A
RED ANCHOR 1 VERNICE 191C
RED ANCHOR 1 VERNICE 148Y

| EPD | BW | WW | YW | MILK | CE | MCE | CE Score | BW | Adj WW | Adj YW |
|-----|------|----|----|------|----|-----|----------|----|--------|--------|
| | -2.3 | 54 | 91 | 25 | 12 | 10 | ★★★★ | 74 | 660 | 1192 |

- Talk about gainability, 6M is a feed converting machine
- Tycoon has always done a great job keeping birth weights down and wean weights up
- 6M is smooth fronted and then explodes into a deep bodied, fleshy structure
- A must see cherry red top quality heifer bull prospect
- A maternal sister to this bull sold to Riverside Angus this fall in the "Ladies of the West" female sale

7M ANCHOR 1 CROSSFIRE 7M

RKKG 7M 2363855 January 19 2024

BAR-H CROSSFIRE 63A
HF CROSSFIRE 280D
HF RUBY 10B

ANCHOR 1 THOR 42A
ANCHOR 1 THOR 49F
HF ROSEBUD 332Y

GRASS ROOTS CROSSFIRE 106

ANCHOR 1 BETTY 260K

COLEMAN CHARLO 0256
S A V MADAME PRIDE 8134
S A V MADAME PRIDE 6660

MJT EXTRA 209B
ANCHOR 1 BETTY 163E
HF BETTY 112Z

| EPD | BW | WW | YW | MILK | CE | MCE | CE Score | BW | Adj WW | Adj YW |
|-----|------|----|----|------|----|-----|----------|----|--------|--------|
| | -1.1 | 40 | 68 | 20 | 13 | 10 | ★ ★ ★ | 62 | 582 | 1005 |

- **Bombproof heifer bull prospect with explosive style**
- This Crossfire son will do you no wrong
- **3 star calving ease, bid with confidence when 7M enters the ring**



9M ANCHOR 1 BEST ANSWER 9M

RKKG 9M 2363857 January 20 2024

| EPD | BW | WW | YW | MILK | CE | MCE | CE Score | BW | Adj WW | Adj YW |
|-----|-----|----|----|------|----|-----|----------|----|--------|--------|
| | 1.1 | 55 | 93 | 32 | 6 | 6.5 | ★ ★ | 67 | 626 | 1037 |

SITZ TRAVELER 8180
S A V FINAL ANSWER 0035
S A V EMULOUS 8145

LFE BEST ANSWER 800H

COLEMAN BRAVO 6313
LFE BA CHINOOK 627F
LFE BA CHINOOK 2183D

HF KODIAK 5R
HF TIGER 5T
HF ECHO 84R

ANCHOR 1 TIBBIE 11C

DMM POSI-TRACTION 57P
SCC TIBBIE 25U
GREENBUSH TIBBIE 5H

- **9M & 10M are a big powerful set of twins that earned their spot in our catalog**
- **Final Answer X Tiger in the same pedigree was destined for greatness**
- 9M was raised by the birth dam and 10M was raised by an outstanding surrogate mother
- These 2 were neck & neck all year for performance and likability
- **Their birth mother 11C is a picture perfect extremely productive Tiger 5T daughter**
- Recommended for use on cows, either of these full brothers will leave behind a uniform set of calves that today's market will desire
- **Outstanding maternal value in this dynamic duo**

10M ANCHOR 1 BEST ANSWER 10M

RKKG 10M 2384921 January 20 2024

| EPD | BW | WW | YW | MILK | CE | MCE | CE Score | BW | Adj WW | Adj YW |
|-----|-----|----|----|------|----|-----|----------|----|--------|--------|
| | 1.1 | 55 | 93 | 32 | 6 | 6.5 | ★ ★ | 71 | 616 | 1070 |



11M

ANCHOR 1 SOONER 11M

RKKG 11M 2363861 January 20 2024

V A R DISCOVERY 2240
PF OKLAHOMA 6625
PF 5682 HENRIETTA PRIDE 0533

S A V REGISTRY 2831
S A V SEEDSTOCK 4838
S A V BLACKCAP MAY 4136

BROOKING SOONER 0052

ANCHOR 1 EVENING TINGE 67G

S A V RENOVATION 6822
BROOKING ROYAL LASS 8007
BROOKING ROYAL LASS 4043

HF HEMI 151T
HF EVENING TINGE 247Y
HF EVENING TINGE 140U

| EPD | BW | WW | YW | MILK | CE | MCE | CE Score | BW | Adj WW | Adj YW |
|-----|-----|----|-----|------|----|-----|----------|----|--------|--------|
| | 1.2 | 62 | 107 | 18 | 6 | 4 | ★★★ | 78 | 634 | 1125 |

- **Our Only Sooner son on offer this year as we are running low on Sooner semen**
- Last year at our sale the Sooner sons were well accepted by our customers
- 11M is a long smooth calving ease prospect showing strong maturity
- **3 star calving ease bull that would work great in a mixed breeding pasture of heifers and cows**



12M

ANCHOR 1 CROSSFIRE 12M

RKKG 12M 2363865 January 20 2024

BAR-H CROSSFIRE 63A
HF CROSSFIRE 280D
HF RUBY 10B

YOUNG DALE YOHAN 18E
YOUNG DALE GINKS 36G
LLB JEMINA 0334E

GRASS ROOTS CROSSFIRE 106

ANCHOR 1 LADY 92K

COLEMAN CHARLO 0256
S A V MADAME PRIDE 8134
S A V MADAME PRIDE 6660

BAR-E-L THE GENERAL 44E
ANCHOR 1 LADY 283H
ANCHOR 1 LADY 345D

| EPD | BW | WW | YW | MILK | CE | MCE | CE Score | BW | Adj WW | Adj YW |
|-----|------|----|----|------|----|-----|----------|----|--------|--------|
| | -0.2 | 59 | 93 | 21 | 12 | 9 | ★★★ | 70 | 638 | 1107 |

- **This Leadoff Crossfire son is a Big Time Herd Bull Prospect!!!**
- 12M travels like a cat and his presence will blow your hair back
- Born at just 70 lbs, 12M is a well balanced, long, deep & soggy, meat machine
- **Come on down to our open house field day and get your eyes on 12M and his gorgeous young dam**
- **Elite 3 star Crossfire son that will point your program in the right direction**



16M

ANCHOR 1 BEST ANSWER 16M

RKKG 16M 2363881 January 21 2024

SITZ TRAVELER 8180
S A V FINAL ANSWER 0035
S A V EMULOUS 8145

HF KODIAK 5R
HF TIGER 5T
HF ECHO 84R

LFE BEST ANSWER 800H

ANCHOR 1 LADY MCHENRY 48B

COLEMAN BRAVO 6313
LFE BA CHINOOK 627F
LFE BA CHINOOK 2183D

SCC LAURENTIAN 45L
SCC LADY MCHENRY 101S
G B T LADY MCHENRY 13J

| EPD | BW | WW | YW | MILK | CE | MCE | CE Score | BW | Adj WW | Adj YW |
|-----|-----|----|----|------|----|-----|----------|----|--------|--------|
| | 2.6 | 56 | 98 | 33 | 2 | 5 | ★ | 94 | 643 | 1030 |

- **Best Answer son with great length and good frame size**
- 16M is a well matured young herdsire that is ready to get the job done
- Showcasing a strong pedigree full of popular bulls from SAV Origen
- **Recommended for use on cows, you will fall in love with 16M's daughters**

† 17M ANCHOR 1 CROSSFIRE 17M

RKKG 17M 2363882 January 21 2024

BAR-H CROSSFIRE 63A
HF CROSSFIRE 280D
HF RUBY 10B

S A V RESOURCE 1441
BROOKING RESOURCE 9146
S A V EMBLYNETTE 9981

GRASS ROOTS CROSSFIRE 106

COLEMAN CHARLO 0256
S A V MADAME PRIDE 8134
S A V MADAME PRIDE 6660

ANCHOR 1 BLACKBIRD 50K

MJT EXTRA 209B
ANCHOR 1 BLACKBIRD 70F
ANCHOR 1 BLACKBIRD 146D

| EPD | BW | WW | YW | MILK | CE | MCE | CE Score | BW | Adj WW | Adj YW |
|-----|-----|----|-----|------|----|-----|----------|----|--------|--------|
| | 2.9 | 56 | 100 | 23 | 4 | 4 | ★★ | 87 | 687 | 1132 |

- **17M owns his proud presence & masculine skull shape**
- Awesome Crossfire son with a bit more jam coming from his dam's side
- 17M is smooth built and offers calving ease with exceptional performance
- Grand dam 70F has a bull in the sale as well 113M
- **Recommended for use on 2nd calvers and mature cows**



† 19M RED ANCHOR 1 RED BLOOD 19M

RKKG 19M 2363884 January 23 2024

RED PZC TMAS FIRESTORM 1800 ET
RED ROJAS RIOJA 6052
RED SIX MILE LAKOTA 112Y

RED SAWMILL PACKMAN 7Y
RED FINE LINE PACKER 20B
RED FINE LINE BERTHA 16Z

RED DUFF RED BLOOD 18114

RED CROWFOOT OLE'S OSCAR 2042M
DUFF JUANADA 927K 15124
O C C JUANADA 927K

RED ANCHOR 1 TARA 328F

RED MCRAES VISION 50T
RED ANCHOR 1 TARA 1A
RED MAR MAC TARA 93Y

| EPD | BW | WW | YW | MILK | CE | MCE | CE Score | BW | Adj WW | Adj YW |
|-----|------|----|----|------|----|-----|----------|----|--------|--------|
| | -1.3 | 37 | 61 | 29 | 9 | 6 | ★★★ | 78 | 601 | 1055 |

- **This Red Blood son will be found early in our sale order on sale day**
- A rock solid, attractive bull that is very hard to flaw
- **19M is everything you are looking for in your next herd bull**
- **3 star calving ease bull with a very bright future ahead of him**
- Bid with confidence on this guy



† 20M ANCHOR 1 HEADSTRONG 20M

RKKG 20M 2363885 January 24 2024

RED U2 HEAD GAMES 330E
RED U2 HEADSTRONG 273G
RED U-2 MISTY 350C

RED U2 BLUE COLLAR 295E
RED U2Q WORKING CLASS 59H
RED U-2 MISTY 350C

RED RAINBOW HEADSTRONG 65J

RED KBJ MAUI 917B
RED HAZEL BLUFF MELTE 105E
RED HAZEL BLUFF MELTE 18C

ANCHOR 1 BEULA 109K

ANCHOR 1 THOR 29D
ANCHOR 1 BEULA 54F
RED ANCHOR 1 BEULA 169D

| EPD | BW | WW | YW | MILK | CE | MCE | CE Score | BW | Adj WW | Adj YW |
|-----|------|----|----|------|----|-----|----------|----|--------|--------|
| | -1.7 | 46 | 78 | 25 | 11 | 9 | ★★★ | 68 | 605 | 1020 |

- **Immaculate Heifer bull option, with a great disposition**
- 20M carries a red gene and is built just how we like them
- **Mark this bull a must see in your catalog**
- **A true 3 star highlight from headstrong**





† 23M RED ANCHOR 1 HEADSTRONG 23M

RKKG 23M 2363888 January 25 2024

RED U2 HEAD GAMES 330E
RED U2 HEADSTRONG 273G
RED U-2 MISTY 350C

RED U2 BLUE COLLAR 295E
RED U2Q WORKING CLASS 59H
RED U-2 MISTY 350C

RED RAINBOW HEADSTRONG 65J

RED ANCHOR 1 VERNICE 195K

RED KBJ MAUI 917B
RED HAZEL BLUFF MELTE 105E
RED HAZEL BLUFF MELTE 18C

RED ANCHOR 1 CROWFOOT 35D
RED ANCHOR 1 VERNICE 377F
RED ANCHOR 1 VERNICE 105U

| EPD | BW | WW | YW | MILK | CE | MCE | CE Score | BW | Adj WW | Adj YW |
|-----|------|----|----|------|----|-----|----------|----|--------|--------|
| | -2.9 | 38 | 64 | 25 | 13 | 10 | ★★★★ | 65 | 598 | 1086 |

- **Headstrong X Working Class is supreme calving ease**
- We are beyond excited to offer this outstanding group of Headstrong sons
- 23M has great length of body and a nice balance of muscle shape
- **Set your mind at ease and select 23M to get your valued replacement heifers serviced**



† 24M RED ANCHOR 1 HEADSTRONG 24M

RKKG 24M 2363889 January 25 2024

RED U2 HEAD GAMES 330E
RED U2 HEADSTRONG 273G
RED U-2 MISTY 350C

RED RSL MOONSHINE 207D
RED YCLC MOONSHINE 55F
RED YCLC KURUBA 849D

RED RAINBOW HEADSTRONG 65J

RED ANCHOR 1 STAR 46K

RED KBJ MAUI 917B
RED HAZEL BLUFF MELTE 105E
RED HAZEL BLUFF MELTE 18C

RED KJHT POWER TAKE OFF
RED ANCHOR 1 STAR 23H
RED ANCHOR 1 STAR 62A

| EPD | BW | WW | YW | MILK | CE | MCE | CE Score | BW | Adj WW | Adj YW |
|-----|-----|----|----|------|----|-----|----------|----|--------|--------|
| | 1.8 | 54 | 94 | 24 | 5 | 6 | ★★★★ | 78 | 637 | 1068 |

- **Phenomenal contribution from Headstrong here**
- 24M is a whole lot of bull in a true calving ease package
- Long as a train and correct built, we just love this bull
- **Highly recommended heifer bull prospect**



† 28M RED ANCHOR 1 HEADSTRONG 28M

RKKG 28M 2363893 January 27 2024

RED U2 HEAD GAMES 330E
RED U2 HEADSTRONG 273G
RED U-2 MISTY 350C

RED SSS GRAVITY 296E
RED SSS GLENFIDDICH 741G
RED SSS DUCHESS 416C

RED RAINBOW HEADSTRONG 65J

RED ANCHOR 1 GOLDIE 32K

RED KBJ MAUI 917B
RED HAZEL BLUFF MELTE 105E
RED HAZEL BLUFF MELTE 18C

RED FINE LINE PACKER 20B
RED ANCHOR 1 GOLDIE 338E
RED ANCHOR 1 GOLDIE 268Z

| EPD | BW | WW | YW | MILK | CE | MCE | CE Score | BW | Adj WW | Adj YW |
|-----|------|----|----|------|----|-----|----------|----|--------|--------|
| | -0.5 | 44 | 75 | 26 | 9 | 8 | ★★★★ | 75 | 641 | 1103 |

- **Awesome, square built headstrong son that offers unlimited style**
- 28M recorded fantastic performance numbers, a true stud in his own right
- **This fellow really caught our attention in the picture pen this year**
- **A safe and reliable heifer bull option that will leave you a strong set of calves**

30M RED ANCHOR 1 HEADSTRONG 30M

RKKG 30M 2363894 January 27 2024

RED U2 HEAD GAMES 330E
 RED U2 HEADSTRONG 273G
 RED U-2 MISTY 350C
RED RAINBOW HEADSTRONG 65J
 RED KBJ MAUI 917B
 RED HAZEL BLUFF MELTE 105E
 RED HAZEL BLUFF MELTE 18C

RED LSF SRR TYSON 3125A
 RED SSS TYCOON 225E
 RED SSS VALENTINE 335Z
RED ANCHOR 1 FREY-EX 33K
 RED TER-RON CORTEZ 85Y
 RED ANCHOR 1 FREY-EX 256D
 RED ANCHOR 1 FREY-EX 157U

| EPD | BW | WW | YW | MILK | CE | MCE | CE Score | BW | Adj WW | Adj YW |
|-----|------|----|----|------|----|-----|----------|----|--------|--------|
| | -3.3 | 56 | 93 | 26 | 15 | 12 | ★ ★ ★ | 55 | 701 | 1067 |

- **Our leadoff Headstrong son, 30M is of true herd bull caliber**
- 30M is long, smooth and incredibly attractive
- **With insane calving ease and growth credentials, 30M is showing early signs of greatness**
- Dam is a gorgeous young cow that can be viewed anytime in our AI pen
- **This elite heifer bull will raise the standard of excellence in your program**



31M RED ANCHOR 1 HEADSTRONG 31M

RKKG 31M 2363895 January 27 2024

RED U2 HEAD GAMES 330E
 RED U2 HEADSTRONG 273G
 RED U-2 MISTY 350C
RED RAINBOW HEADSTRONG 65J
 RED KBJ MAUI 917B
 RED HAZEL BLUFF MELTE 105E
 RED HAZEL BLUFF MELTE 18C

RED U2 BLUE COLLAR 295E
 RED U2Q WORKING CLASS 59H
 RED U-2 MISTY 350C
RED ANCHOR 1 FREYJA 126K
 RED ANCHOR 1 KODIAK 53D
 RED ANCHOR 1 SAM'S FREYJA 139G
 RED ANCHOR 1 SAMS FREYJA 7W

| EPD | BW | WW | YW | MILK | CE | MCE | CE Score | BW | Adj WW | Adj YW |
|-----|------|----|----|------|----|-----|----------|----|--------|--------|
| | -1.1 | 46 | 78 | 23 | 10 | 9 | ★ ★ ★ | 73 | 638 | 1060 |

- **Another heifer friendly option from headstrong**
- Headstrong is the easiest calving bull we have ever used on heifers
- **Buy with confidence here**
- Really solid 3 star calving ease contender



32M RED ANCHOR 1 RED BLOOD 32M

RKKG 32M 2363896 January 28 2024

RED PZC TMAS FIRESTORM 1800 ET
 RED ROJAS RIOJA 6052
 RED SIX MILE LAKOTA 112Y
RED DUFF RED BLOOD 18114
 RED CROWFOOT OLE'S OSCAR 2042M
 DUFF JUANADA 927K 15124
 O C C JUANADA 927K

RED K-C ONE IRON 4P
 RED ANCHOR 1 IRONMAN 71U
 RED ROYAL SAM'S SIERRA 06R
RED ANCHOR 1 STRETCH 280A
 RIDGE BANDO 598-282ET
 RED CROWFOOT STRETCH 4320P
 RED CROWFOOT STRETCH 1328L

| EPD | BW | WW | YW | MILK | CE | MCE | CE Score | BW | Adj WW | Adj YW |
|-----|-----|----|----|------|----|-----|----------|----|--------|--------|
| | 1.4 | 41 | 72 | 30 | 4 | 2 | ★ | 91 | 681 | 1089 |

- **Powerful Red Blood son from the very top of our program**
- 32M is long bodied, wide topped, and well balanced
- **This is a bull that will leave you a set of calves to build a herd around**
- **Dam 280A is a no miss 11 year old beauty**
- Maternal sister to 32M sold at Red Roundup last fall to Pohl Land and Cattle Ltd
- **Recommended for 2nd calvers & cows, 32M is the real deal**





† 35M RED ANCHOR 1 HEADSTRONG 35M

RKKG 35M 2363898 January 29 2024

RED U2 HEAD GAMES 330E
RED U2 HEADSTRONG 273G
RED U-2 MISTY 350C

RED U-2 RECKONING 149A
RED U2 MERLOT 266F
RED U-2 MABEL 60A

RED RAINBOW HEADSTRONG 65J

RED ANCHOR 1 FREYJA 278K

RED KBJ MAUI 917B
RED HAZEL BLUFF MELTE 105E
RED HAZEL BLUFF MELTE 18C

RED ANCHOR 1 IRONMAN 71U
RED ANCHOR 1 FREYJA 144Y
RED ANCHOR 1 FREYJA 239W

| EPD | BW | WW | YW | MILK | CE | MCE | CE Score | BW | Adj WW | Adj YW |
|-----|------|----|----|------|----|-----|----------|----|--------|--------|
| | -1.3 | 45 | 79 | 25 | 10 | 10 | ★★★★ | 64 | 613 | 1000 |

- Take a look at the profile on this proud young stud
- 35M is exactly the type of offspring we were hoping to acquire when we selected our Headstrong herd sire, **Big Time Sale Feature!**
- Raised by a gorgeous, 1st calf heifer
- **This high quality heifer bull option has a stacked pedigree**



† 37M ANCHOR 1 CROSSFIRE 37M

RKKG 37M 2363900 January 30 2024

BAR-H CROSSFIRE 63A
HF CROSSFIRE 280D
HF RUBY 10B

S A V RESOURCE 1441
BROOKING RESOURCE 9146
S A V EMBLYNETTE 9981

GRASS ROOTS CROSSFIRE 106

ANCHOR 1 ROSEBUD 206K

COLEMAN CHARLO 0256
S A V MADAME PRIDE 8134
S A V MADAME PRIDE 6660

ANCHOR 1 LUTE 31C
ANCHOR 1 ROSEBUD 264F
ANCHOR 1 ROSEBUD 171C

| EPD | BW | WW | YW | MILK | CE | MCE | CE Score | BW | Adj WW | Adj YW |
|-----|-----|----|----|------|----|-----|----------|----|--------|--------|
| | 1.5 | 46 | 84 | 23 | 7 | 6 | ★★★★ | 74 | 610 | 1035 |

- It is truly rewarding to see our recently acquired bloodlines meshing together to create special young bulls like 37M
- 37M displays nice length of body and smoothness, strong maturity and a great hair coat
- **Maternally you cannot go wrong with a Crossfire son**
- **A heifer bull prospect that will sire attractive calves with uniformity**



† 46M ANCHOR 1 BEST ANSWER 46M

RKKG 46M 2363908 February 01 2024

SITZ TRAVELER 8180
S A V FINAL ANSWER 0035
S A V EMULOUS 8145

HF DONE RIGHT 32Y
ANCHOR 1 DONE RIGHT 18A
HF TIBBIE 198Y

LFE BEST ANSWER 800H

ANCHOR 1 MISS LUCY 18H

COLEMAN BRAVO 6313
LFE BA CHINOOK 627F
LFE BA CHINOOK 2183D

YOUNG DALE YOHANN 39Y
HF MISS LUCY 220A
HF MISS LUCY 202W

| EPD | BW | WW | YW | MILK | CE | MCE | CE Score | BW | Adj WW | Adj YW |
|-----|-----|----|-----|------|----|-----|----------|----|--------|--------|
| | 1.3 | 57 | 100 | 31 | 4 | 8 | ★★ | 81 | 671 | 1154 |

- **Here is a profile and a pedigree that screams, Easy Doing Ability!**
- 46M is all bull, and has a nice balance between natural muscle and flesh cover
- **Calving ease prospect from a productive cow family**
- **Recommended for use on well developed heifers and cows**

47M ANCHOR 1 CROSSFIRE 47M

RKKG 47M 2363909 February 01 2024

BAR-H CROSSFIRE 63A
HF CROSSFIRE 280D
HF RUBY 10B

ANCHOR 1 THOR 42A
ANCHOR 1 THOR 204F
HF TIBBIE 225A

GRASS ROOTS CROSSFIRE 106

COLEMAN CHARLO 0256
S A V MADAME PRIDE 8134
S A V MADAME PRIDE 6660

ANCHOR 1 ECHO 277K

HF TIGER 5T
ANCHOR 1 ECHO 51E
HF ECHO 143U

| EPD | BW | WW | YW | MILK | CE | MCE | CE Score | BW | Adj WW | Adj YW |
|-----|-----|----|----|------|----|-----|----------|----|--------|--------|
| | 0.4 | 46 | 80 | 22 | 10 | 7 | ★★★ | 75 | 660 | 1098 |

- Our Crossfire sire is taking our herd to another level, right before our eyes
- 47M will prove to be a rock solid heifer bull early into your calving season
- Calving heifers is enjoyable when they do the work themselves
- Very fancy 3 star bull, with unlimited maternal values



49M RED ANCHOR 1 TYCOON 49M

RKKG 49M 2363911 February 01 2024

RED MUSHRUSH IMPRESSIVE CA U23
RED LSF SRR TYSON 3125A
RED LSF JIBA R5009 W9247

RED U-2 LIMITLESS 298Y
RED KBJ LIMITLESS 947A
RED KBJ SYRINGA 917X

RED SSS TYCOON 225E

RED SSS AMBUSH 771X
RED SSS VALENTINE 335Z
RED SSS VALENTINE 387W

RED ANCHOR 1 MAX-FLAME 151F

RED GEIS KNIGHT 43R
RED ROYAL MAX-FLAME 56T
RED ROYAL MAX-FLAME 232H

| EPD | BW | WW | YW | MILK | CE | MCE | CE Score | BW | Adj WW | Adj YW |
|-----|------|----|----|------|----|-----|----------|----|--------|--------|
| | -0.9 | 45 | 79 | 19 | 9 | 10 | ★★★ | 72 | 632 | 1028 |

- This Fancy Tycoon son will be easy to spot in our pens on sale day
- 49M is long, smooth and cherry red with extra hip shape
- His dam 151F is a really solid cow that always weans a good one
- Stylish heifer bull option with a terrific disposition



58M ANCHOR 1 BEST ANSWER 58M

RKKG 58M 2363950 February 03 2024

SITZ TRAVELER 8180
S A V FINAL ANSWER 0035
S A V EMULOUS 8145

PLEASANT VALLEY LUTE 1207
ANCHOR 1 LUTE 31C
HF MAYFLOWER 69U

LFE BEST ANSWER 800H

COLEMAN BRAVO 6313
LFE BA CHINOOK 627F
LFE BA CHINOOK 2183D

ANCHOR 1 STYLISH LADY 103G

GEIS BUTLER 250'08
GEIS STYLISH LADY 82'11
GEIS STYLISH LADY 68'05

| EPD | BW | WW | YW | MILK | CE | MCE | CE Score | BW | Adj WW | Adj YW |
|-----|-----|----|-----|------|----|-----|----------|----|--------|--------|
| | 2.9 | 65 | 110 | 34 | -1 | 4 | ★ | 91 | 777 | 1178 |

- This fellow is truly impressive
- 58M packs a powerful performance punch
- One of the longest most massive bulls in our group
- 58M will leave behind a solid set of heavy calves in the fall
- Recommended for cows, 58M has the frame to cover all sizes of cows





59M ANCHOR 1 CROSSFIRE 59M
 RKKG 59M 2363951 February 03 2024

BAR-H CROSSFIRE 63A
 HF CROSSFIRE 280D
 HF RUBY 10B

YOUNG DALE YOHAN 18E
 YOUNG DALE GINKS 36G
 LLB JEMINA 0334E

GRASS ROOTS CROSSFIRE 106

COLEMAN CHARLO 0256
 S A V MADAME PRIDE 8134
 S A V MADAME PRIDE 6660

ANCHOR 1 TIBBIE 35K

ANCHOR 1 WHO'S THAT 9C
 ANCHOR 1 TIBBIE 281H
 ANCHOR 1 TIBBIE 210C

| EPD | BW | WW | YW | MILK | CE | MCE | CE Score | BW | Adj WW | Adj YW |
|-----|------|----|----|------|----|-----|----------|----|--------|--------|
| | -0.9 | 53 | 85 | 19 | 13 | 10 | ★★★ | 65 | 658 | 1046 |

- **Stylish Crossfire son from a strong cow family**
- 59M's great neck extension and perfect angus head make him a great choice to service heifers
- **3 star calving ease in a complete polished package**



61M ANCHOR 1 BEST ANSWER 61M
 RKKG 61M 2363953 February 04 2024

SITZ TRAVELER 8180
 S A V FINAL ANSWER 0035
 S A V EMULOUS 8145

HF DONE RIGHT 32Y
 ANCHOR 1 DONE RIGHT 18A
 HF TIBBIE 198Y

LFE BEST ANSWER 800H

COLEMAN BRAVO 6313
 LFE BA CHINOOK 627F
 LFE BA CHINOOK 2183D

ANCHOR 1 TIBBIE 121C

HF SWAGGER 75W
 HF TIBBIE 260Y
 HF TIBBIE 52U

| EPD | BW | WW | YW | MILK | CE | MCE | CE Score | BW | Adj WW | Adj YW |
|-----|-----|----|----|------|----|-----|----------|----|--------|--------|
| | 0.6 | 48 | 85 | 29 | 6 | 9 | ★★ | 83 | 599 | 1074 |

- **Wow 61M could very well be the breeding piece you have been searching for**
- Absolutely flawless in his design with a look and build like no other
- **His dam 121C is Kyle's favorite black cow in our entire herd**
- **An honest bull that could do great things in the black angus industry**
- **121C currently has a son sired by Alcatraz walking the pastures at Anchor 1 and 61M is among the same level of excellence.**



67M ANCHOR 1 CROSSFIRE 67M
 RKKG 67M 2363959 February 06 2024

BAR-H CROSSFIRE 63A
 HF CROSSFIRE 280D
 HF RUBY 10B

HF WHO'S THAT 7A
 ANCHOR 1 WHO'S THAT 9C
 HF FANTASY 364W

GRASS ROOTS CROSSFIRE 106

COLEMAN CHARLO 0256
 S A V MADAME PRIDE 8134
 S A V MADAME PRIDE 6660

ANCHOR 1 TIBBIE 292K

ANCHOR 1 THOR 42A
 ANCHOR 1 TIBBIE 58F
 HF TIBBIE 41X

| EPD | BW | WW | YW | MILK | CE | MCE | CE Score | BW | Adj WW | Adj YW |
|-----|------|----|----|------|----|-----|----------|----|--------|--------|
| | -0.8 | 44 | 78 | 20 | 13 | 10 | ★★★ | 67 | 632 | 1054 |

- **Striking presence from a very well mannered cow family**
- 67M's great grand dam 41X, can still be found at our ranch at 15 years of age
- **Outstanding 3 star bull that will work magically on your cherished replacements**

70M ANCHOR 1 CROSSFIRE 70M

RKKG 70M 2363962 February 07 2024

BAR-H CROSSFIRE 63A
HF CROSSFIRE 280D
HF RUBY 10B

HF WHO'S THAT 7A
ANCHOR 1 WHO'S THAT 9C
HF FANTASY 364W

GRASS ROOTS CROSSFIRE 106

COLEMAN CHARLO 0256
S A V MADAME PRIDE 8134
S A V MADAME PRIDE 6660

ANCHOR 1 TIBBIE 128K

MJT EXTRA 209B
ANCHOR 1 TIBBIE 150F
ANCHOR 1 TIBBIE 33B

| EPD | BW | WW | YW | MILK | CE | MCE | CE Score | BW | Adj WW | Adj YW |
|-----|------|----|----|------|----|-----|----------|----|--------|--------|
| | -0.8 | 50 | 86 | 20 | 12 | 10 | ★★★ | 59 | 652 | 1092 |

- Another outstanding calve ease contribution from Crossfire
- I am getting excited to see our bulls penned up in sire groups at our open house
- 70M is another great option for getting your heifers serviced with ease



71M RED ANCHOR 1 HEADSTRONG 71M

RKKG 71M 2363963 February 07 2024

RED U2 HEAD GAMES 330E
RED U2 HEADSTRONG 273G
RED U-2 MISTY 350C

RED K-C KING OF SCOTS 87E
RED KC KING BEAU 46G
RED K-C MISS DI 46E

RED RAINBOW HEADSTRONG 65J

RED KBJ MAUI 917B
RED HAZEL BLUFF MELTE 105E
RED HAZEL BLUFF MELTE 18C

RED ANCHOR 1 BIRDIE 205K

RED ROYAL PATRIOT 103W
RED ANCHOR 1 BIRDIE 115B
RED ANCHOR 1 BIRDIE 268X

| EPD | BW | WW | YW | MILK | CE | MCE | CE Score | BW | Adj WW | Adj YW |
|-----|-----|----|----|------|----|-----|----------|----|--------|--------|
| | 1.1 | 41 | 72 | 21 | 4 | 5 | ★★★ | 79 | 596 | 1044 |

- Long, smooth and attractive
- These Headstrong sons will take your worries away at calving time
- Easy on the eyes and easy on your beautiful heifers



78M RED ANCHOR 1 HEADSTRONG 78M

RKKG 78M 2363970 February 10 2024

RED U2 HEAD GAMES 330E
RED U2 HEADSTRONG 273G
RED U-2 MISTY 350C

RED RSL MOONSHINE 207D
RED YCLC MOONSHINE 55F
RED YCLC KURUBA 849D

RED RAINBOW HEADSTRONG 65J

RED KBJ MAUI 917B
RED HAZEL BLUFF MELTE 105E
RED HAZEL BLUFF MELTE 18C

RED ANCHOR 1 FLAMETTE 36K

ANCHOR 1 THOR 29D
RED ANCHOR 1 FLAMETTE 268H
RED ANCHOR 1 FLAMETTE 121E

| EPD | BW | WW | YW | MILK | CE | MCE | CE Score | BW | Adj WW | Adj YW |
|-----|------|----|----|------|----|-----|----------|----|--------|--------|
| | -3.1 | 44 | 76 | 22 | 15 | 12 | ★★★ | 62 | 610 | 1037 |

- Aerodynamically built for calving ease
- 78M will allow you to continue on with chores when you see a heifer starting to labour
- 78M is a long smooth and attractive 3 star candidate





† 79M **RED ANCHOR 1 TYCOON 79M**
 RKKG 79M 2363971 February 10 2024

RED MUSHRUSH IMPRESSIVE CA U23
 RED LSF SRR TYSON 3125A
 RED LSF JIBA R5009 W9247

RED SSS TYCOON 225E

RED SSS AMBUSH 771X
 RED SSS VALENTINE 335Z
 RED SSS VALENTINE 387W

RED ROYAL K-C TAK'N CHARGE 04P
 RED ANCHOR 1 IN CHARGE 29U
 RED ROYAL BEULA 36N

RED ANCHOR 1 FREYJA 45B

RED K-C ONE IRON 4P
 RED ANCHOR 1 SAMS FREYJA 7W
 RED ROYAL SAM'S FREYJA 04R

| EPD | BW | WW | YW | MILK | CE | MCE | CE Score | BW | Adj WW | Adj YW |
|-----|------|----|----|------|----|-----|----------|----|--------|--------|
| | -1.4 | 34 | 66 | 19 | 11 | 11 | ★★★★ | 81 | 550 | 946 |

- We call this guy the mailman, he is built for easy delivery
- Cherry red, long bodied and super smooth shouldered
- Dam 45B is a very impressive red angus cow
- Recommended for heifers



† 80M **RED ANCHOR 1 TYCOON 80M**
 RKKG 80M 2363972 February 11 2024

RED LSF SRR TYSON 3125A
 RED SSS TYCOON 225E
 RED SSS VALENTINE 335Z

RED ANCHOR 1 TYCOON 52K

RED BLAIR'S PHENOM 210W
 RED ANCHOR 1 MAX-FLAME 161B
 RED ROYAL MAX-FLAME 56T

RED SOO LINE POWER EYE 161X
 RED KJHT POWER TAKE OFF
 RED SRA PAINTBUCKET

RED ANCHOR 1 STAR 23H

RED SSS SOLDIER 365W
 RED ANCHOR 1 STAR 62A
 RED LAZY MC STAR 185M

| EPD | BW | WW | YW | MILK | CE | MCE | CE Score | BW | Adj WW | Adj YW |
|-----|-----|----|----|------|----|-----|----------|----|--------|--------|
| | 0.6 | 46 | 85 | 25 | 5 | 8 | ★★★★ | 79 | 861 | 1260 |

- This Tycoon 52K son is thick, deep and soggy made
- 80M is a replica of his home raised sire
- This fellow offers big time weaning weights, as we all know "the more they weigh, the more they pay" at the market
- Select 80M on sale day if you want to increase wean weights on your calves and milk production on your cows
- Recommended for well developed heifers and cows



† 81M **ANCHOR 1 CHECKMATE 81M**
 RKKG 81M 2363973 February 11 2024

SCHIEFELBEIN SHOWMAN 338
 HF PORTRAYAL 67H
 HF TIBBIE 73D

BAR-E-L CHECKMATE 71K

HF ALCATRAZ 60F
 BAR-E-L BLACKBIRD 50H
 BAR-E-L BLACKBIRD 63U

ANCHOR 1 THOR 42A
 ANCHOR 1 THOR 49F
 HF ROSEBUD 332Y

ANCHOR 1 QUEENIE 129H

HF EL TIGRE 28U
 HF QUEENIE 270Y
 HF QUEENIE 101K

| EPD | BW | WW | YW | MILK | CE | MCE | CE Score | BW | Adj WW | Adj YW |
|-----|-----|----|----|------|----|-----|----------|-----|--------|--------|
| | 6.4 | 60 | 99 | 29 | -7 | 0 | ★ | 103 | 704 | 1129 |

- Flawless structured, Big time performance son from Checkmate
- 81M is as good of a bull as you will find this spring
- He displays eye appeal, natural thickness and true herd bull maturity
- Recommended for cows, 81M could be the game changer in your program moving forward

87M ANCHOR 1 BRAVO 87M

RKKG 87M 2363979 February 13 2024

COLEMAN BRAVO 6313 YOUNG DALE YOHAN 18E
 U2 ACCLAIM 144G YOUNG DALE GINKS 36G
 U2 LASSIE 53E LLB JEMINA 0334E

EVERBLACK FULL DRAW BRAVO 65J ANCHOR 1 EVENING TINGE 62J

BROOKING REAL ESTATE 6072 S A V SEEDSTOCK 4838
 KUEBER ROSEBUD 9G ANCHOR 1 EVENING TINGE 67G
 MWC ROSEBUD 32Y HF EVENING TINGE 247Y

| EPD | BW | WW | YW | MILK | CE | MCE | CE Score | BW | Adj WW | Adj YW |
|-----|------|----|----|------|----|-----|----------|----|--------|--------|
| | -1.2 | 49 | 79 | 20 | 12 | 10 | ★ ★ ★ | 69 | 568 | 908 |

- These Bravo sons are new to our program this year and offer optimal calving ease
- 87M offers a nice and complete look in an easy fleshing moderate framed package
- Females will be terrific from the Bravo's
- 3 star calving ease for the heifer pen



88M RED ANCHOR 1 KINGSTON 88M

RKKG 88M 2407430 February 13 2024

RED HOWE MAGNUM 169W RED PIE SPECIALIST 430
 RED U2 GENESIS 103G RED WILBAR SPECIAL BLEND 101D
 RED U-2 LAKOTA 54B RED YY URRISAL 945W

RED TER-RON KINGSTON 79K RED ANCHOR 1 BEULA 143H

TER-RON CONTINENTAL 120D ANCHOR 1 THOR 29D
 RED TER-RON REBECCA 97G ANCHOR 1 BEULA 54F
 RED TER-RON REBECCA 4T RED ANCHOR 1 BEULA 169D

| EPD | BW | WW | YW | MILK | CE | MCE | CE Score | BW | Adj WW | Adj YW |
|-----|-----|----|----|------|-----|-----|----------|----|--------|--------|
| | 0.2 | 47 | 85 | 24 | 4.5 | 6.0 | ★ ★ ★ | 78 | 611 | 993 |

- This Kingston son is a real gem
- Incredibly attractive in appearance & weaning right near the top of the pen
- Definitely Mark 88M as a must see in your catalog
- Heifer bull prospect with superior performance capabilities



91M ANCHOR 1 CROSSFIRE 91M

RKKG 91M 2364042 February 13 2024

BAR-H CROSSFIRE 63A MAY-WAY BREAKOUT 1310
 HF CROSSFIRE 280D HF ALCATRAZ 60F
 HF RUBY 10B HF MAYFLOWER 191Z

GRASS ROOTS CROSSFIRE 106 ANCHOR 1 ALCATRAZ 34K

COLEMAN CHARLO 0256 ANCHOR 1 THOR 42A
 S A V MADAME PRIDE 8134 ANCHOR 1 IDELETTE 29C
 S A V MADAME PRIDE 6660 ANCHOR 1 IDELETTE 4A

| EPD | BW | WW | YW | MILK | CE | MCE | CE Score | BW | Adj WW | Adj YW |
|-----|----|----|----|------|----|-----|----------|----|--------|--------|
| | 3 | 49 | 88 | 27 | 4 | 5 | ★ ★ | 85 | 648 | 1076 |

- Handsome Crossfire son with a stacked pedigree
- Smooth fronted bull with a fantastic topline
- This fellow is built so smooth that he should work on well developed heifers
- Backed by a fantastic cow family with amazing disposition





96M ANCHOR 1 CHECKMATE 96M

RKKG 96M 2364055 February 14 2024

SCHIEFELBEIN SHOWMAN 338
HF PORTRAYAL 67H
HF TIBBIE 73D

YOUNG DALE YOHAN 18E
YOUNG DALE GINKS 36G
LLB JEMINA 0334E

BAR-E-L CHECKMATE 71K

HF ALCATRAZ 60F
BAR-E-L BLACKBIRD 50H
BAR-E-L BLACKBIRD 63U

ANCHOR 1 ECHO 1J

S A V SEEDSTOCK 4838
ANCHOR 1 ECHO 31G
HF ECHO 189A

| EPD | BW | WW | YW | MILK | CE | MCE | CE Score | BW | Adj WW | Adj YW |
|-----|-----|----|-----|------|----|-----|----------|----|--------|--------|
| | 2.1 | 63 | 100 | 27 | 4 | 6 | ★★ | 84 | 690 | 1029 |

- Kyle's pick of all the yearling bulls for most promising Herd Bull
- His look does it for me every day and on paper 96M just makes sense
- A true asset in what we believe is our strongest pen of bulls to date
- 96M and his flawless dam are worth the drive near or far to see
- An epic Checkmate son that will breed excellence into any program



100M RED ANCHOR 1 TYCOON 100M

RKKG 100M 2364066 February 16 2024

RED LSF SRR TYSON 3125A
RED SSS TYCOON 225E
RED SSS VALENTINE 335Z

ANCHOR 1 THOR 42A
ANCHOR 1 THOR 29D
RED ANCHOR 1 SAM'S ICE 259B

RED ANCHOR 1 TYCOON 52K

RED BLAIR'S PHENOM 210W
RED ANCHOR 1 MAX-FLAME 161B
RED ROYAL MAX-FLAME 56T

RED ANCHOR 1 GOLDIE 231G

RED TOWAW ARMAGEDDON 171S
RED ANCHOR 1 GOLDIE 280Z
RED BULLTOWN GOLDIE 13L

| EPD | BW | WW | YW | MILK | CE | MCE | CE Score | BW | Adj WW | Adj YW |
|-----|-----|----|----|------|----|-----|----------|-----|--------|--------|
| | 4.1 | 45 | 84 | 22 | -3 | 6 | ★ | 102 | 620 | 1049 |

- Solid built red bull strictly for the cow herd
- 100M is a big deep bodied bull that is very desirable in appearance
- Dam is a cherry red, bigger framed, strong milking cow
- 100 M's offspring will grow, gain and perform



103M ANCHOR 1 CHECKMATE 103M

RKKG 103M 2364075 February 16 2024

SCHIEFELBEIN SHOWMAN 338
HF PORTRAYAL 67H
HF TIBBIE 73D

S A V RESOURCE 1441
BROOKING RESOURCE 9146
S A V EMBLYNETTE 9981

BAR-E-L CHECKMATE 71K

HF ALCATRAZ 60F
BAR-E-L BLACKBIRD 50H
BAR-E-L BLACKBIRD 63U

ANCHOR 1 ECHO 68J

O C C LEGACY 839L
ANCHOR 1 ECHO 35E
HF ECHO 176U

| EPD | BW | WW | YW | MILK | CE | MCE | CE Score | BW | Adj WW | Adj YW |
|-----|----|----|-----|------|----|-----|----------|-----|--------|--------|
| | 6 | 72 | 125 | 34 | -6 | -1 | ★ | 103 | 770 | 1229 |

- Checkmate X Resource = Monumentous Performance
- 103M is an impressive, bigger framed, barrel bodied meat machine
- If you want to add pounds to your calf crop 103M may pound the scale harder than any other bull come sale day
- Recommended for the cow herd

105M ANCHOR 1 CROSSFIRE 105M

RKKG 105M 2364082 February 16 2024

BAR-H CROSSFIRE 63A
HF CROSSFIRE 280D
HF RUBY 10B

COLEMAN BRAVO 6313
COLEMAN TRIUMPH 9145
LAWSONS CHLOE C815

GRASS ROOTS CROSSFIRE 106

COLEMAN CHARLO 0256
S A V MADAME PRIDE 8134
S A V MADAME PRIDE 6660

ANCHOR 1 TIBBIE 66K

ANCHOR 1 THOR 42A
ANCHOR 1 TIBBIE 246F
HF TIBBIE 198Y

| EPD | BW | WW | YW | MILK | CE | MCE | CE Score | BW | Adj WW | Adj YW |
|-----|-----|----|----|------|----|-----|----------|----|--------|--------|
| | 0.1 | 51 | 88 | 22 | 10 | 7 | ★★★ | 72 | 686 | 1131 |

- These Crossfire sons are so stylish and evenly uniform
- 105M would be a responsible and safe choice for your heifer pen
- Very good bull here with a bright future in his path



109M ANCHOR 1 BRAVO 109M

RKKG 109M 2364096 February 17 2024

COLEMAN BRAVO 6313
U2 ACCLAIM 144G
U2 LASSIE 53E

YOUNG DALE HI DEFINITION 185B
YOUNG DALE DEFIANCE 199F
YOUNG DALE GRACE 126Z

EVERBLACK FULL DRAW BRAVO 65J

BROOKING REAL ESTATE 6072
KUEBER ROSEBUD 9G
MWC ROSEBUD 32Y

ANCHOR 1 MISS LUCY 166J

YOUNG DALE YOHANN 39Y
HF MISS LUCY 220A
HF MISS LUCY 202W

| EPD | BW | WW | YW | MILK | CE | MCE | CE Score | BW | Adj WW | Adj YW |
|-----|-----|----|----|------|----|-----|----------|----|--------|--------|
| | 1.8 | 48 | 88 | 24 | 5 | 6 | ★★★ | 82 | 584 | 1003 |

- Hairy and attractive, these Bravo sons are a nice addition to our bull pen
- 109M was raised by a nice uddered, productive young female
- 3 star calving ease with strong maternal lineage



113M ANCHOR 1 TRIUMPH 113M

RKKG 113M 2392253 February 18 2024

COLEMAN BRAVO 6313
COLEMAN TRIUMPH 9145
LAWSONS CHLOE C815

MJT TOUCH DOWN 505Z
MJT EXTRA 209B
MJT LADYBIRD 440Z

ANCHOR 1 TRIUMPH 135K

HF KODIAK 5R
HF BLACKWOOD LADY 46Y
HF BLACKWOOD LADY 306W

ANCHOR 1 BLACKBIRD 70F

ANCHOR 1 MOTIVE 78B
ANCHOR 1 BLACKBIRD 146D
HF BLACKBIRD 6Y

| EPD | BW | WW | YW | MILK | CE | MCE | CE Score | BW | Adj WW | Adj YW |
|-----|-----|----|----|------|----|-----|----------|----|--------|--------|
| | 2.6 | 56 | 98 | 19 | 2 | 5 | ★★ | 85 | 696 | 1046 |

- 70F hit a shot with this son
- 113M is a bit larger framed bull with a fantastic disposition
- Calving ease, length and style in a complete package





†114M RED ANCHOR 1 TYCOON 114M

RKKG 114M 2364109 February 18 2024

RED LSF SRR TYSON 3125A
 RED SSS TYCOON 225E
 RED SSS VALENTINE 335Z

RED U-2 RECKONING 149A
 RED U2 MERLOT 266F
 RED U-2 MABEL 60A

RED ANCHOR 1 TYCOON 52K

RED BLAIR'S PHENOM 210W
 RED ANCHOR 1 MAX-FLAME 161B
 RED ROYAL MAX-FLAME 56T

RED ANCHOR 1 FREY-EX 231H

RED TER-RON CORTEZ 85Y
 RED ANCHOR 1 FREY-EX 45D
 RED ANCHOR 1 FREY-EX 306Y

| EPD | BW | WW | YW | MILK | CE | MCE | CE Score | BW | Adj WW | Adj YW |
|-----|-----|----|----|------|----|-----|----------|----|--------|--------|
| | 2.8 | 56 | 94 | 24 | 0 | 7 | ★ | 92 | 720 | 1188 |

- Very similar in confirmation to his sire
- **114M is a thick made, wide topped, soggy rascal**
- Check all the boxes here if you are on the hunt for a red angus yearling performance bull
- **The calves from 114M will thrive in today's market**



†115M RED ANCHOR 1 KINGSTON 115M

RKKG 115M 2407008 February 18 2024

RED HOWE MAGNUM 169W
 RED U2 GENESIS 103G
 RED U-2 LAKOTA 54B

ANCHOR 1 THOR 42A
 ANCHOR 1 THOR 29D
 RED ANCHOR 1 SAM'S ICE 259B

RED TER-RON KINGSTON 79K

TER-RON CONTINENTAL 120D
 RED TER-RON REBECCA 97G
 RED TER-RON REBECCA 4T

ANCHOR 1 BEULA 205J

RED TER-RON CORTEZ 85Y
 RED ANCHOR 1 BEULA 169D
 RED ANCHOR 1 BEULA 92X

| EPD | BW | WW | YW | MILK | CE | MCE | CE Score | BW | Adj WW | Adj YW |
|-----|------|----|----|------|-----|-----|----------|----|--------|--------|
| | -0.6 | 41 | 75 | 23 | 6.5 | 8 | ★★★ | 82 | 610 | 1059 |

- **Fancy made Kingston son that shows true calving ease characteristics**
- His cherry red hair coat and nice angus constructed skull will catch your attention
- **3 star calving ease bull from a gorgeous momma cow**



†117M ANCHOR 1 TRIUMPH 117M

RKKG 117M 2392254 February 18 2024

COLEMAN BRAVO 6313
 COLEMAN TRIUMPH 9145
 LAWSONS CHLOE C815

S A V PIONEER 7301
 BAR-E-L THE GENERAL 44E
 BAR-E-L DUCHESS 53C

ANCHOR 1 TRIUMPH 135K

HF KODIAK 5R
 HF BLACKWOOD LADY 46Y
 HF BLACKWOOD LADY 306W

ANCHOR 1 LADY PD 304H

ANCHOR 1 THOR 42A
 ANCHOR 1 LADY PD 200E
 SCC LADY PD 117A

| EPD | BW | WW | YW | MILK | CE | MCE | CE Score | BW | Adj WW | Adj YW |
|-----|-----|----|----|------|----|-----|----------|----|--------|--------|
| | 3.4 | 51 | 92 | 22 | 3 | 6 | ★★ | 89 | 976 | 1386 |

- **Very strong maternal quality, a true female producer**
- 117M will breed uniformity, with a purpose into his offspring
- **Dam is a gorgeous young cow**
- Born at 89 lbs, we do recommend him for 2nd calvers & cows

118M ANCHOR 1 TRIUMPH 118M

RKKG 118M 2407009 February 18 2024

COLEMAN BRAVO 6313
COLEMAN TRIUMPH 9145
LAWSON'S CHLOE C815

PLEASANT VALLEY LUTE 1207
ANCHOR 1 LUTE 31C
HF MAYFLOWER 69U

ANCHOR 1 TRIUMPH 135K

HF KODIAK 5R
HF BLACKWOOD LADY 46Y
HF BLACKWOOD LADY 306W

ANCHOR 1 LADY PD 108G

SCC TRAVELER 147S
SCC LADY PD 117A
SCC LADY PD 82X

| EPD | BW | WW | YW | MILK | CE | MCE | CE Score | BW | Adj WW | Adj YW |
|-----|-----|----|----|------|-----|-----|----------|----|--------|--------|
| | 2.6 | 45 | 82 | 29 | 2.5 | 4 | ★★ | 85 | 674 | 1030 |

- **These Triumph sons are uniform in type and performance**
- 118M is another rock solid contribution from Triumph
- **With 46Y in his pedigree, the udder quality on his daughters will be flawless**
- Displaying strong calving ease, but better suited for 2nd calver's and cows



120M RED ANCHOR 1 TYCOON 120M

RKKG 120M 2364130 February 19 2024

RED LSF SRR TYSON 3125A
RED SSS TYCOON 225E
RED SSS VALENTINE 335Z

RED U-2 RECKONING 149A
RED U2 MERLOT 266F
RED U-2 MABEL 60A

RED ANCHOR 1 TYCOON 52K

RED BLAIR'S PHENOM 210W
RED ANCHOR 1 MAX-FLAME 161B
RED ROYAL MAX-FLAME 56T

RED ANCHOR 1 PEPPER 236J

RED KBJ LIMITLESS 947A
RED ANCHOR 1 PEPPER 210F
RED ANCHOR 1 PEPPER 205A

| EPD | BW | WW | YW | MILK | CE | MCE | CE Score | BW | Adj WW | Adj YW |
|-----|-----|----|----|------|----|-----|----------|----|--------|--------|
| | 0.5 | 47 | 82 | 28 | 6 | 11 | ★★★★ | 73 | 604 | 875 |

- **Cherry red and attractive, backed by solid pedigree**
- Tycoon has bred so well in our program
- **3 star calving ease bull that crushed the scale at weaning time**



126M RED ANCHOR 1 KINGSTON 126M

RKKG 126M 2383530 February 19 2024

RED HOWE MAGNUM 169W
RED U2 GENESIS 103G
RED U-2 LAKOTA 54B

ANCHOR 1 THOR 42A
ANCHOR 1 THOR 29D
RED ANCHOR 1 SAM'S ICE 259B

RED TER-RON KINGSTON 79K

TER-RON CONTINENTAL 120D
RED TER-RON REBECCA 97G
RED TER-RON REBECCA 4T

RED ANCHOR 1 TARA 102H

RED BRYLOR RED KODIAK 3A
RED ANCHOR 1 TARA 166D
RED MAR MAC TARA 93Y

| EPD | BW | WW | YW | MILK | CE | MCE | CE Score | BW | Adj WW | Adj YW |
|-----|------|----|----|------|----|-----|----------|----|--------|--------|
| | -3.5 | 40 | 70 | 23 | 14 | 12 | ★★★★ | 63 | 601 | 988 |

- **Kingston was a great addition to our herd bull lineup**
- Another maternally stable calving ease bloodline
- **Very attractive bull, highly recommended for use on heifers**





127M ANCHOR 1 CHECKMATE 127M
 RKKG 127M 2364146 February 20 2024

SCHIEFELBEIN SHOWMAN 338
 HF PORTRAYAL 67H
 HF TIBBIE 73D

BARSTOW CASH
 BROOKING CASH ADVANCE 8120
 E A ROSE 918

BAR-E-L CHECKMATE 71K

HF ALCATRAZ 60F
 BAR-E-L BLACKBIRD 50H
 BAR-E-L BLACKBIRD 63U

ANCHOR 1 TIBBIE 86H

ANCHOR 1 BULLSEYE 37C
 ANCHOR 1 TIBBIE 186F
 HF TIBBIE 236X

| EPD | BW | WW | YW | MILK | CE | MCE | CE Score | BW | Adj WW | Adj YW |
|-----|----|----|-----|------|----|-----|----------|----|--------|--------|
| | 5 | 67 | 116 | 29 | -4 | 1 | ★ | 98 | 667 | 1117 |

- **Moderate framed, exceptionally fleshy Checkmate son**
- 127M could just look at feed and convert it to pounds
- If improving feed conversion and easy doing ability is what you need, look no further
- **127M is recommended for use on cows**



130M ANCHOR 1 BRAVO 130M
 RKKG 130M 2364147 February 21 2024

COLEMAN BRAVO 6313
 U2 ACCLAIM 144G
 U2 LASSIE 53E

YOUNG DALE YOHAN 18E
 YOUNG DALE GINKS 36G
 LLB JEMINA 0334E

EVERBLACK FULL DRAW BRAVO 65J

BROOKING REAL ESTATE 6072
 KUEBER ROSEBUD 9G
 MWC ROSEBUD 32Y

ANCHOR 1 QUEENIE 25J

MJT EXTRA 209B
 ANCHOR 1 QUEENIE 85G
 ANCHOR 1 QUEENIE 251D

| EPD | BW | WW | YW | MILK | CE | MCE | CE Score | BW | Adj WW | Adj YW |
|-----|----|----|----|------|----|-----|----------|----|--------|--------|
| | 0 | 52 | 85 | 22 | 10 | 10 | ★★★ | 77 | 619 | 1058 |

- **Dam is a moderate and stylish cow with a balanced udder**
- Very attractive Bravo son that your replacement heifers will appreciate
- **3 stars for style and calving ease**



132M RED ANCHOR 1 TYCOON 132M
 RKKG 132M 2364151 February 21 2024

RED LSF SRR TYSON 3125A
 RED SSS TYCOON 225E
 RED SSS VALENTINE 335Z

ANCHOR 1 THOR 42A
 ANCHOR 1 THOR 204F
 HF TIBBIE 225A

RED ANCHOR 1 TYCOON 52K

RED BLAIR'S PHENOM 210W
 RED ANCHOR 1 MAX-FLAME 161B
 RED ROYAL MAX-FLAME 56T

ANCHOR 1 STRETCH 318J

XO CROWFOOT 0102X
 RED ANCHOR 1 STRETCH 73C
 RED CROWFOOT STRETCH 4320P

| EPD | BW | WW | YW | MILK | CE | MCE | CE Score | BW | Adj WW | Adj YW |
|-----|-----|----|----|------|----|-----|----------|----|--------|--------|
| | 0.3 | 49 | 83 | 24 | 8 | 11 | ★★★ | 79 | 632 | 1099 |

- **Awesome Tycoon son from a foundation cow family**
- 132M is long bodied, smooth built and attractive
- **Another 3 star calving ease bull with great performance potential**

135M

ANCHOR 1 BRAVO 135M

RKKG 135M 2364157 February 23 2024

COLEMAN BRAVO 6313
U2 ACCLAIM 144G
U2 LASSIE 53E

S A V PIONEER 7301
BAR-E-L THE GENERAL 44E
BAR-E-L DUCHESS 53C

EVERBLACK FULL DRAW BRAVO 65J ANCHOR 1 TIBBIE 124H

BROOKING REAL ESTATE 6072
KUEBER ROSEBUD 9G
MWC ROSEBUD 32Y

HF SIMULATOR 62Z
ANCHOR 1 TIBBIE 1C
HF TIBBIE 236X

| EPD | BW | WW | YW | MILK | CE | MCE | CE Score | BW | Adj WW | Adj YW |
|-----|------|----|----|------|----|-----|----------|----|--------|--------|
| | -0.3 | 40 | 75 | 22 | 10 | 10 | ★★★ | 76 | 603 | 995 |

- **This Bravo son has been a standout from an early age**
- Offering tremendous style and marketability
- Maternally proven genetics bred in to a total and complete package
- **3 star calving ease, a bull you will not want to miss on sale day**



141M

ANCHOR 1 TRIUMPH 141M

RKKG 141M 2392260 February 26 2024

COLEMAN BRAVO 6313
COLEMAN TRIUMPH 9145
LAWSONS CHLOE C815

CONNEALY CONSENSUS 7229
HF SYNDICATE 213Z
HF MISS BLACKCAP 27R

ANCHOR 1 TRIUMPH 135K ANCHOR 1 FLORA 222C

HF KODIAK 5R
HF BLACKWOOD LADY 46Y
HF BLACKWOOD LADY 306W

S A V 004 PREDOMINANT 4438
HF FLORA 113U
HF FLORA 153L

| EPD | BW | WW | YW | MILK | CE | MCE | CE Score | BW | Adj WW | Adj YW |
|-----|-----|----|----|------|----|-----|----------|----|--------|--------|
| | 1.2 | 49 | 86 | 21 | 7 | 6 | ★★★ | 78 | 656 | 1104 |

- **Backed by a strong cow family from proven genetics**
- 141M is a long smooth bodied bull with an average frame size
- He offers great calving ease and notable performance
- **Another all around fantastic heifer bull option**



145M

ANCHOR 1 CHECKMATE 145M

RKKG 145M 2364174 February 28 2024

SCHIEFELBEIN SHOWMAN 338
HF PORTRAYAL 67H
HF TIBBIE 73D

HF KODIAK 5R
HF TIGER 5T
HF ECHO 84R

BAR-E-L CHECKMATE 71K ANCHOR 1 TIBBIE 60H

HF ALCATRAZ 60F
BAR-E-L BLACKBIRD 50H
BAR-E-L BLACKBIRD 63U

LLB 4X FINAL ANSWER 861Z
ANCHOR 1 TIBBIE 6C
SCC TIBBIE 90A

| EPD | BW | WW | YW | MILK | CE | MCE | CE Score | BW | Adj WW | Adj YW |
|-----|-----|----|-----|------|----|-----|----------|----|--------|--------|
| | 1.7 | 59 | 102 | 34 | 6 | 7 | ★★ | 83 | 711 | 1184 |

- **We are very proud to be able to offer bulls of this caliber**
- **145M is flawless in his makeup, a true breeding treasure**
- Backed by stacked, tried and tested genetics on both sides
- **Maternally 145M is a masterpiece, keep his daughters to build your herd around**
- **His grand dam 6C is a foundation cow, her outstanding son also sells on April 12th as 271M**





147M

ANCHOR 1 BRAVO 147M

RKKG 147M 2364176 February 28 2024

COLEMAN BRAVO 6313
U2 ACCLAIM 144G
U2 LASSIE 53E

S A V PIONEER 7301
BAR-E-L THE GENERAL 44E
BAR-E-L DUCHESS 53C

EVERBLACK FULL DRAW BRAVO 65J ANCHOR 1 EDNA 74H

BROOKING REAL ESTATE 6072
KUEBER ROSEBUD 9G
MWC ROSEBUD 32Y

ANCHOR 1 BULLSEYE 37C
ANCHOR 1 EDNA 7E
GEIS EDNA 66'10

| EPD | BW | WW | YW | MILK | CE | MCE | CE Score | BW | Adj WW | Adj YW |
|-----|------|----|----|------|----|-----|----------|----|--------|--------|
| | -0.2 | 44 | 77 | 22 | 10 | 10 | ★★★ | 76 | 605 | 1031 |

- **Another top quality heifer bull prospect from Bravo**
- 147M checks all the boxes and would be a great addition to any program
- Stylish calf crops and beautiful uddered daughters is what 147M will offer
- **3 star stud that might be exactly what you are looking for**



152M

ANCHOR 1 GINKS 152M

RKKG 152M 2364185 March 01 2024

YOUNG DALE CHALLENGER 2C
YOUNG DALE YOHAN 18E
YOUNG DALE GRACE 129C

SOO LINE THOR 1085
ANCHOR 1 THOR 42A
HF TIBBIE 260Y

YOUNG DALE GINKS 36G

ANCHOR 1 LADY 223D

PEAK DOT ELIMINATOR 765Z
LLB JEMINA 0334E
LLB JEMINA 688W

SCC TRAVELER 147S
SCC LADY PD 117A
SCC LADY PD 82X

| EPD | BW | WW | YW | MILK | CE | MCE | CE Score | BW | Adj WW | Adj YW |
|-----|-----|----|----|------|----|-----|----------|----|--------|--------|
| | 1.3 | 52 | 81 | 19 | 9 | 9 | ★★ | 90 | 671 | 1081 |

- **Ginks sons are proven female producers with awesome temperaments**
- Natural thickness and easy doing ability is another Ginks trait
- **152M is a powerful standout with so much potential**
- Very good bull here recommended for cows



155M

ANCHOR 1 KING BEAU 155M

RKKG 155M 2365229 March 01 2024

RED PARINGA IRON ORE E27
RED K-C KING OF SCOTS 87E
RED NETHERTON ESSENCE M654

ANCHOR 1 THOR 42A
ANCHOR 1 THOR 29D
RED ANCHOR 1 SAM'S ICE 259B

RED KC KING BEAU 46G

ANCHOR 1 OSCE 83G

RED DRYFORK K-C PRECISELY JACK
RED K-C MISS DI 46E
RED K-C MISS DI 46T

XO CROWFOOT 0102X
ANCHOR 1 OSCE 63C
RED KBJ OSCE 940R

| EPD | BW | WW | YW | MILK | CE | MCE | CE Score | BW | Adj WW | Adj YW |
|-----|-----|----|----|------|----|-----|----------|----|--------|--------|
| | 2.3 | 47 | 76 | 22 | 2 | 8 | ★ | 90 | 683 | 1067 |

- **A red gene carrier that has a lot to offer his future calf crop**
- 155M, is built just how we like them, long thick and structurally sound
- **Recommended for cows, 155M's calves will grow and perform**

164M ANCHOR 1 TRIUMPH 164M

RKKG 164M 2392262 March 03 2024

COLEMAN BRAVO 6313
COLEMAN TRIUMPH 9145
LAWSON'S CHLOE C815

RED NCJ COMING IN HOT 24E
RED SIX MILE GENTRY 342G
RED SIX MILE & CO LASSIE 417X

ANCHOR 1 TRIUMPH 135K

RED ANCHOR 1 FREYJA 41J

HF KODIAK 5R
HF BLACKWOOD LADY 46Y
HF BLACKWOOD LADY 306W

RED ANCHOR 1 IN CHARGE 29U
RED ANCHOR 1 FREYJA 45B
RED ANCHOR 1 SAMS FREYJA 7W

| EPD | BW | WW | YW | MILK | CE | MCE | CE Score | BW | Adj WW | Adj YW |
|-----|-----|----|----|------|----|-----|----------|----|--------|--------|
| | 1.3 | 43 | 76 | 22 | 4 | 5 | ★ ★ ★ | 78 | 628 | 1136 |

- **This red gene carrier is a smooth made utility bull**
- Backed by a solid proven cow family
- **Very flashy bull that will work wonderful on heifers or cows**
- **3 star stud**



169M RED ANCHOR 1 TYCOON 169M

RKKG 169M 2364232 March 04 2024

RED LSF SRR TYSON 31 25A
RED SSS TYCOON 225E
RED SSS VALENTINE 335Z

RED U-2 RECKONING 149A
RED U2 MERLOT 266F
RED U-2 MABEL 60A

RED ANCHOR 1 TYCOON 52K

RED ANCHOR 1 ROSETTE 85J

RED BLAIR'S PHENOM 210W
RED ANCHOR 1 MAX-FLAME 161B
RED ROYAL MAX-FLAME 56T

RED ANCHOR 1 RED KODIAK 179C
RED ANCHOR 1 ROSETTE 56E
RED ANCHOR 1 ROSETTE 49Z

| EPD | BW | WW | YW | MILK | CE | MCE | CE Score | BW | Adj WW | Adj YW |
|-----|------|----|----|------|----|-----|----------|----|--------|--------|
| | -0.3 | 43 | 74 | 22 | 8 | 11 | ★ ★ ★ | 77 | 595 | 957 |

- **Awsome prospect from Tycoon**
- 169M is long, smooth and attractive
- He displays a perfect balance of natural muscle shape and depth of body
- **3 Star calving ease bull that will put pounds on his calves**



171M ANCHOR 1 TRIUMPH 171M

RKKG 171M 2392264 March 05 2024

COLEMAN BRAVO 6313
COLEMAN TRIUMPH 9145
LAWSON'S CHLOE C815

ANCHOR 1 THOR 42A
ANCHOR 1 THOR 29D
RED ANCHOR 1 SAM'S ICE 259B

ANCHOR 1 TRIUMPH 135K

RED ANCHOR 1 FLAME 46F

HF KODIAK 5R
HF BLACKWOOD LADY 46Y
HF BLACKWOOD LADY 306W

RED BRYLOR RED KODIAK 3A
RED ANCHOR 1 MAXI FLAME 65D
RED ANCHOR 1 MAXI-FLAME 50U

| EPD | BW | WW | YW | MILK | CE | MCE | CE Score | BW | Adj WW | Adj YW |
|-----|-----|----|----|------|----|-----|----------|----|--------|--------|
| | 1.1 | 54 | 94 | 21 | 6 | 7 | ★ ★ | 80 | 664 | 1022 |

- **Great hair coat on a solid, bigger boned bull here**
- 171M offers a little more performance and frame that he gets through his mother
- **Although 171M has credible calving ease numbers, he should be used on 2nd calver's or cows**
- His calves will weigh up in the fall of the year





173M ANCHOR 1 CHECKMATE 173M
 RKKG 173M 2364235 March 05 2024

SCHIEFELBEIN SHOWMAN 338
 HF PORTRAYAL 67H
 HF TIBBIE 73D

S A V PIONEER 7301
 BAR-E-L THE GENERAL 44E
 BAR-E-L DUCHESS 53C

BAR-E-L CHECKMATE 71K

HF ALCATRAZ 60F
 BAR-E-L BLACKBIRD 50H
 BAR-E-L BLACKBIRD 63U

ANCHOR 1 GILDA 232J

SOUTHLAND EXCLUSIVE 62U
 HF TIBBIE 198Y
 HF TIBBIE 78M

| EPD | BW | WW | YW | MILK | CE | MCE | CE Score | BW | Adj WW | Adj YW |
|-----|-----|----|----|------|----|-----|----------|----|--------|--------|
| | 2.7 | 54 | 92 | 29 | 3 | 7 | ★★ | 77 | 649 | 1022 |

- Another great Checkmate son representing a foundation cow family
- 173M was born to be great with the pedigree behind him
- Checkmate is a powerful new sire that stamps his sons with a purpose
- Love the look of this bull, recommended for 2nd calver's & cows



178M RED ANCHOR 1 WORK CLASS 178M
 RKKG 178M 2364240 March 06 2024

RED U-2 RECKONING 149A
 RED U2 BLUE COLLAR 295E
 RED U-2 ANEXA 439A

RED SAWMILL PACKMAN 7Y
 RED FINE LINE PACKER 20B
 RED FINE LINE BERTHA 16Z

RED U2Q WORKING CLASS 59H

RED U-2 RECON 192Y
 RED U-2 MISTY 350C
 RED U-2 MISTY 60Z

RED ANCHOR 1 ANNE'S LACE 266G

RED ANCHOR 1 IN CHARGE 29U
 RED ANCHOR 1 ANNE'S LACE 134B
 RED ANCHOR 1 ANNE'S LACE 67T

| EPD | BW | WW | YW | MILK | CE | MCE | CE Score | BW | Adj WW | Adj YW |
|-----|------|----|----|------|----|-----|----------|----|--------|--------|
| | -2.4 | 29 | 48 | 26 | 12 | 10 | ★★★ | 70 | 603 | 950 |

- Bombproof heifer bull option from Working Class
- 178M is long, smooth, attractive and structurally sound
- Count on 178M to service your heifers while leaving your mind at ease



180M RED ANCHOR 1 KINGSTON 180M
 RKKG 180M 2383533 March 07 2024

RED HOWE MAGNUM 169W
 RED U2 GENESIS 103G
 RED U-2 LAKOTA 54B

RED U-2 LIMITLESS 298Y
 RED KBJ LIMITLESS 947A
 RED KBJ SYRINGA 917X

RED TER-RON KINGSTON 79K

TER-RON CONTINENTAL 120D
 RED TER-RON REBECCA 97G
 RED TER-RON REBECCA 4T

RED ANCHOR 1 CARMELLA 111H

RED TOWAW ARMAGEDDON 171S
 RED ANCHOR 1 CARMELLA 233W
 RED ROYAL CARMELLA 55S

| EPD | BW | WW | YW | MILK | CE | MCE | CE Score | BW | Adj WW | Adj YW |
|-----|-----|----|----|------|----|-----|----------|----|--------|--------|
| | 1.1 | 39 | 70 | 23 | 2 | 6 | ★★★ | 78 | 580 | 973 |

- Built like a bullet, another true heifer bull prospect from Kingston
- Backed by proven calving ease pedigree, 180M will make calving your heifers a breeze
- 3 star stud, bid with confidence

191M ANCHOR 1 DEFIANCE 191M

RKKG 191M 2374474 March 08 2024

YOUNG DALE HI DEFINITION 185B
YOUNG DALE DEFIANCE 199F
YOUNG DALE GRACE 126Z

S A V PIONEER 7301
BAR-E-L THE GENERAL 44E
BAR-E-L DUCHESS 53C

ANCHOR 1 DEFIANCE 129J

HF EL TIGRE 28U
HF QUEENIE 270Y
HF QUEENIE 101K

ANCHOR 1 FLORA 55G

MJT EXTRA 209B
ANCHOR 1 FLORA 11E
ANCHOR 1 FLORA 222C

| EPD | BW | WW | YW | MILK | CE | MCE | CE Score | BW | Adj WW | Adj YW |
|-----|-----|----|----|------|----|-----|----------|----|--------|--------|
| | 1.3 | 48 | 83 | 21 | 9 | 11 | ★★★ | 78 | 636 | 1092 |

- Our Defiance herd bull is also no stranger to sireing standouts in our pen
- 191M is picture perfect and we are sure you will appreciate him even more in real life
- Outstanding young herd bull here that will offer thickness and strong milking ability
- Recommended for well developed heifers and cows



197M ANCHOR 1 DEFFIANCE 197M

RKKG 197M 2375035 March 09 2024

YOUNG DALE HI DEFINITION 185B
YOUNG DALE DEFIANCE 199F
YOUNG DALE GRACE 126Z

MJT TOUCH DOWN 505Z
MJT EXTRA 209B
MJT LADYBIRD 440Z

ANCHOR 1 DEFFIANCE 129J

HF EL TIGRE 28U
HF QUEENIE 270Y
HF QUEENIE 101K

ANCHOR 1 TIBBIE 150F

BELVIN PANIC SWITCH 2'11
ANCHOR 1 TIBBIE 33B
HF TIBBIE 260Y

| EPD | BW | WW | YW | MILK | CE | MCE | CE Score | BW | Adj WW | Adj YW |
|-----|------|----|----|------|----|-----|----------|----|--------|--------|
| | -0.2 | 49 | 86 | 21 | 10 | 12 | ★★★ | 73 | 657 | 1057 |

- Back to back catalog features from Defiance
- 197M is a top calving ease prospect offering elevated performance
- This guy will surly sire the kind of cattle we strive to produce
- Suitable for use on heifers



198M RED ANCHOR 1 KINGSTON 198M

RKKG 198M 2407010 March 09 2024

RED HOWE MAGNUM 169W
RED U2 GENESIS 103G
RED U-2 LAKOTA 54B

XO CROWFOOT 0102X
RED ANCHOR 1 CROWFOOT 35D
RED ANCHOR 1 BEULA 65U

RED TER-RON KINGSTON 79K

TER-RON CONTINENTAL 120D
RED TER-RON REBECCA 97G
RED TER-RON REBECCA 4T

RED ANCHOR 1 OSCE 337H

XO CROWFOOT 0102X
ANCHOR 1 OSCE 63C
RED KBJ OSCE 940R

| EPD | BW | WW | YW | MILK | CE | MCE | CE Score | BW | Adj WW | Adj YW |
|-----|-----|----|----|------|----|-----|----------|----|--------|--------|
| | 0.1 | 43 | 71 | 29 | 4 | 7 | ★★★ | 64 | 598 | 1009 |

- This Kingston son is straight in his lines and incredibly smooth
- 198M's beautiful young dam is really starting to prove her value
- A heifer bull prospect worth taking a good look at





200M ANCHOR 1 TRIUMPH 200M
 RKKG 200M 2392269 March 11 2024

COLEMAN BRAVO 6313
 COLEMAN TRIUMPH 9145
 LAWSONS CHLOE C815

RED SAWMILL PACKMAN 7Y
 RED FINE LINE PACKER 20B
 RED FINE LINE BERTHA 16Z

ANCHOR 1 TRIUMPH 135K

RED ANCHOR 1 MAX-FLAME 97G

HF KODIAK 5R
 HF BLACKWOOD LADY 46Y
 HF BLACKWOOD LADY 306W

RED BLAIR'S PHENOM 210W
 RED ANCHOR 1 MAX-FLAME 161B
 RED ROYAL MAX-FLAME 56T

| EPD | BW | WW | YW | MILK | CE | MCE | CE Score | BW | Adj WW | Adj YW |
|-----|-----|----|----|------|----|-----|----------|----|--------|--------|
| | 0.4 | 51 | 86 | 25 | 7 | 9 | ★ ★ ★ | 75 | 753 | 1135 |

- 46Y & 161B in the same pedigree is maternal magic
- 2 of our top angus cows to ever walk our pastures 1 black & 1 red
- A concrete heifer bull prospect that will send your program in a great direction



202M ANCHOR 1 GINKS 202M
 RKKG 202M 2374651 March 11 2024

YOUNG DALE CHALLENGER 2C
 YOUNG DALE YOHAN 18E
 YOUNG DALE GRACE 129C

CONNELLY EARNAN 076E
 BROOKING BANK NOTE 4040
 E A ROSE 918

YOUNG DALE GINKS 36G

ANCHOR 1 ROSEBUD 8E

PEAK DOT ELIMINATOR 765Z
 LLB JEMINA 0334E
 LLB JEMINA 688W

HF HEMI 151T
 HF ROSEBUD 332Y
 HF ROSEBUD 91U

| EPD | BW | WW | YW | MILK | CE | MCE | CE Score | BW | Adj WW | Adj YW |
|-----|------|----|----|------|----|-----|----------|----|--------|--------|
| | -1.1 | 59 | 84 | 12 | 12 | 13 | ★ ★ ★ | 60 | 624 | 1074 |

- When greatness is in there blood they rise to the top
- 202M is a lights out heifer bull, loaded with style and presence
- His dam is a flawless beauty from a foundation family
- Select 202M for your heifers sale day and you won't look back



207M ANCHOR 1 GINKS 207M
 RKKG 207M 2374659 March 12 2024

YOUNG DALE CHALLENGER 2C
 YOUNG DALE YOHAN 18E
 YOUNG DALE GRACE 129C

PLEASANT VALLEY LUTE 1207
 ANCHOR 1 LUTE 31C
 HF MAYFLOWER 69U

YOUNG DALE GINKS 36G

ANCHOR 1 BLACKBIRD 108F

PEAK DOT ELIMINATOR 765Z
 LLB JEMINA 0334E
 LLB JEMINA 688W

SOUTHLAND EXCLUSIVE 62U
 HF BLACKBIRD 6Y
 HF BLACKBIRD 150U

| EPD | BW | WW | YW | MILK | CE | MCE | CE Score | BW | Adj WW | Adj YW |
|-----|-----|----|----|------|----|-----|----------|----|--------|--------|
| | 0.8 | 53 | 81 | 18 | 9 | 10 | ★ ★ ★ | 77 | 607 | 1065 |

- These Ginks sons are the real deal for style and calving ease
- 207M is long, smooth and stylish with a perfect angus skull
- Another top notch heifer bull sired by Ginks

222M RED ANCHOR 1 WORK CLASS 222M

RKKG 222M 2375007 March 14 2024

RED U-2 RECKONING 149A
RED U2 BLUE COLLAR 295E
RED U-2 ANEXA 439A

TOWAW TENACIOUS 11X
RED ANCHOR 1 TENACIOUS 99C
RED ANCHOR 1 SURPRIZE 39Z

RED U2Q WORKING CLASS 59H

RED ANCHOR 1 RAINMAKER 65F

RED U-2 RECON 192Y
RED U-2 MISTY 350C
RED U-2 MISTY 60Z

RED ANCHOR 1 BIG COUNTRY 4Y
RED ANCHOR 1 RAINMAKER 316B
RED ANCHOR 1 RAINMAKER 115U

| EPD | BW | WW | YW | MILK | CE | MCE | CE Score | BW | Adj WW | Adj YW |
|-----|-----|----|----|------|----|-----|----------|----|--------|--------|
| | 0.8 | 32 | 53 | 24 | 5 | 8 | ★★ | 87 | 637 | 1016 |

- Long, deep sided, and soggy Working Class son
- 222M still embodies great calving ease traits but injects a little more jam from his dam
- Dam is an easy keeping broody momma cow
- Recommended for use on 2nd calvers & cows



223M ANCHOR 1 WORK CLASS 223M

RKKG 223M 2375032 March 14 2024

RED U-2 RECKONING 149A
RED U2 BLUE COLLAR 295E
RED U-2 ANEXA 439A

HF TIGER 5T
TOWAW TENACIOUS 11X
RED TOWAW DARLINE 15R

RED U2Q WORKING CLASS 59H

ANCHOR 1 KURUBA 150C

RED U-2 RECON 192Y
RED U-2 MISTY 350C
RED U-2 MISTY 60Z

RED ROYAL BEEF 718T
RED ANCHOR 1 KURUBA 358Y
RED ANCHOR 1 KURUBA 173U

| EPD | BW | WW | YW | MILK | CE | MCE | CE Score | BW | Adj WW | Adj YW |
|-----|-----|----|----|------|----|-----|----------|----|--------|--------|
| | 1.6 | 36 | 61 | 25 | 3 | 3 | ★ | 96 | 676 | 1105 |

- Truly impressive, solid built Working Class son with a Red Gene
- 223M's length, thickness, size is incredible
- Very powerful performance bull from a 1,600 lbs momma cow
- Select 223M to put pounds on your calves and money in your pockets



231M ANCHOR 1 GINKS 231M

RKKG 231M 2375016 March 16 2024

YOUNG DALE CHALLENGER 2C
YOUNG DALE YOHAN 18E
YOUNG DALE GRACE 129C

S A V REGISTRY 2831
S A V SENSATION 5615
S A V BLACKCAP MAY 4136

YOUNG DALE GINKS 36G

ANCHOR 1 TIBBIE 104G

PEAK DOT ELIMINATOR 765Z
LLB JEMINA 0334E
LLB JEMINA 688W

LLB 4X FINAL ANSWER 861Z
ANCHOR 1 TIBBIE 6C
SCC TIBBIE 90A

| EPD | BW | WW | YW | MILK | CE | MCE | CE Score | BW | Adj WW | Adj YW |
|-----|-----|----|----|------|----|-----|----------|----|--------|--------|
| | 1.3 | 57 | 90 | 19 | 8 | 9 | ★★★★ | 86 | 627 | 1101 |

- Spectacular Ginks son, offering maternal greatness
- 231M is built right from the ground up and will produce at a high level
- A performance stud, from a foundation cow family
- Recommended for well developed heifers and cows





236M

ANCHOR 1 GINKS 236M

RKKG 236M 2375020 March 17 2024

YOUNG DALE CHALLENGER 2C
YOUNG DALE YOHAN 18E
YOUNG DALE GRACE 129C

KR BULLSEYE 3451
ANCHOR 1 BULLSEYE 37C
HF ROSEBUD 19U

YOUNG DALE GINKS 36G

ANCHOR 1 ECHO 147F

PEAK DOT ELIMINATOR 765Z
LLB JEMINA 0334E
LLB JEMINA 688W

HF TIGER 5T
ANCHOR 1 ECHO 128D
HF ECHO 334X

| EPD | BW | WW | YW | MILK | CE | MCE | CE Score | BW | Adj WW | Adj YW |
|-----|-----|----|----|------|----|-----|----------|----|--------|--------|
| | 1.8 | 62 | 96 | 16 | 7 | 7 | ★★★ | 83 | 660 | 1071 |

- Ginks stamps his sons with an authentic style
- It would be worth your drive to see how these Ginks sons pen up together sale day
- Really high quality bull from consistent maternal background
- **Another 3 star, suitable for heifers**



247M

ANCHOR 1 DEFFIANCE 247M

RKKG 247M 2379243 March 19 2024

YOUNG DALE HI DEFINITION 185B
YOUNG DALE DEFFIANCE 199F
YOUNG DALE GRACE 126Z

HF KODIAK 5R
HF TIGER 5T
HF ECHO 84R

ANCHOR 1 DEFFIANCE 129J

ANCHOR 1 ECHO 51E

HF EL TIGRE 28U
HF QUEENIE 270Y
HF QUEENIE 101K

S A V 004 PREDOMINANT 4438
HF ECHO 143U
HF ECHO 39R

| EPD | BW | WW | YW | MILK | CE | MCE | CE Score | BW | Adj WW | Adj YW |
|-----|----|----|----|------|----|-----|----------|-----|--------|--------|
| | 4 | 54 | 98 | 25 | 1 | 4 | ★ | 100 | 678 | 1120 |

- **Wow! If i had hair, this catalog photo would blow it back**
- 247M is a very complete and powerful individual
- Dam is a flawless, good sized, big bodied Tiger 5T daughter
- **247M will leave you a set of calves that will make you proud in the fall**



271M

ANCHOR 1 GINKS 271M

RKKG 271M 2407011 March 25 2024

YOUNG DALE CHALLENGER 2C
YOUNG DALE YOHAN 18E
YOUNG DALE GRACE 129C

REMINGTON FINAL ANSWER 4X
LLB 4X FINAL ANSWER 861Z
REMINGTON CRUSH MAID 134U

YOUNG DALE GINKS 36G

ANCHOR 1 TIBBIE 6C

PEAK DOT ELIMINATOR 765Z
LLB JEMINA 0334E
LLB JEMINA 688W

LLB 184S BANDO 502X
SCC TIBBIE 90A
SCC TIBBIE 50T

| EPD | BW | WW | YW | MILK | CE | MCE | CE Score | BW | Adj WW | Adj YW |
|-----|------|----|----|------|------|-----|----------|----|--------|--------|
| | -0.2 | 58 | 85 | 20 | 10.5 | 11 | ★★★ | 72 | 757 | 1214 |

- **Feature Ginks son that we think very highly of**
- 271M will be found early on in our sale order
- **The old 6C foundation cow just keeps cranking out herdsires year after year**
- **Displaying True Herd Bull Caliber, 271M is one of our best in the offering**
- **Highly recommended for your cherished replacement heifers**

278M ANCHOR 1 CHECKMATE 278M

RKKG 278M 2379304 March 27 2024

SCHIEFELBEIN SHOWMAN 338
HF PORTRAYAL 67H
HF TIBBIE 73D

HF WHO'S THAT 7A
ANCHOR 1 WHO'S THAT 9C
HF FANTASY 364W

BAR-E-L CHECKMATE 71K

HF ALCATRAZ 60F
BAR-E-L BLACKBIRD 50H
BAR-E-L BLACKBIRD 63U

ANCHOR 1 TIBBIE 135J

HF TIGER 5T
ANCHOR 1 TIBBIE 11C
SCC TIBBIE 25U

| EPD | BW | WW | YW | MILK | CE | MCE | CE Score | BW | Adj WW | Adj YW |
|-----|-----|----|-----|------|----|-----|----------|----|--------|--------|
| | 2.1 | 59 | 100 | 30 | 4 | 6 | ★★★ | 79 | 705 | 1123 |

- **Fancy Checkmate son that is smoother built and finer boned than his brothers**
- Calving ease coming in from all corners of his pedigree
- **278M should work well on bigger heifers and cows**
- **Strong maternal potential here as well**



280M ANCHOR 1 GINKS 280M

RKKG 280M 2379306 March 28 2024

YOUNG DALE CHALLENGER 2C
YOUNG DALE YOHAN 18E
YOUNG DALE GRACE 129C

KR BULLSEYE 3451
ANCHOR 1 BULLSEYE 37C
HF ROSEBUD 19U

YOUNG DALE GINKS 36G

PEAK DOT ELIMINATOR 765Z
LLB JEMINA 0334E
LLB JEMINA 688W

ANCHOR 1 VALENTINE 226E

HF RESOLUTION 18Z
ANCHOR 1 MISTYS VALENTINE 98B
HF MISTY'S VALENTINE 95Y

| EPD | BW | WW | YW | MILK | CE | MCE | CE Score | BW | Adj WW | Adj YW |
|-----|-----|----|----|------|----|-----|----------|----|--------|--------|
| | 0.3 | 55 | 84 | 16 | 10 | 10 | ★★★ | 76 | 635 | 1013 |

- **This guy's highly productive dam has a 2 year old bull in our offering as well, 252L**
- 280M is clean fronted, fancy and impressive
- 280M will sire calves of outstanding uniformity
- **Another phenomenal heifer bull candidate from Ginks**



287M RED ANCHOR 1 WORK CLASS 287M

RKKG 287M 2379310 March 30 2024

RED U-2 RECKONING 149A
RED U2 BLUE COLLAR 295E
RED U-2 ANEXA 439A

RED TER-RON FULLY LOADED 540R
RED RAINBOW FULL-SCALE 35U
RED SIX MILE LASSIE 377P

RED U2Q WORKING CLASS 59H

RED U-2 RECON 192Y
RED U-2 MISTY 350C
RED U-2 MISTY 60Z

RED ANCHOR 1 VERNICE 142Z

RED ROYAL HI HO 73R
RED ANCHOR 1 VERNICE 105U
RED CROWFOOT VERNICE 1122L

| EPD | BW | WW | YW | MILK | CE | MCE | CE Score | BW | Adj WW | Adj YW |
|-----|------|----|----|------|----|-----|----------|----|--------|--------|
| | -1.6 | 31 | 49 | 28 | 10 | 11 | ★★★ | 58 | 699 | 1028 |

- **This guy's 13 year old foundation dam can still be seen roaming our pens with her 12th calf at foot**
- Longevity and consistency runs through 287M's blood
- **Extreme style and lights out calving ease credentials make him a great prospect**
- **Use in your heifer pen without any worries or doubts**





314M RED ANCHOR 1 WORK CLASS 314M

RKKG 314M 2379322 April 17 2024

RED U-2 RECKONING 149A
RED U2 BLUE COLLAR 295E
RED U-2 ANEXA 439A

RED CRCC BOOM 100N
RED BLAIR'S PHENOM 210W
RED SOUTHLAND LAVAGIRL 54R

RED U2Q WORKING CLASS 59H

RED ANCHOR 1 ROSETTE 210A

RED U-2 RECON 192Y
RED U-2 MISTY 350C
RED U-2 MISTY 60Z

RED BROWN CREEK VALUE 13P
RED ROYAL ROSETTE 1126T
RED ROYAL ROSETTE 62N

| EPD | BW | WW | YW | MILK | CE | MCE | CE Score | BW | Adj WW | Adj YW |
|-----|----|----|----|------|----|-----|----------|----|--------|--------|
| | 0 | 32 | 49 | 24 | 6 | 10 | ★★★★ | 78 | 753 | 1048 |

- **The youngest bull in our offering and he is a doozy**
- This outstanding young prospect holds his own in a very strong pen of bulls
- **His gorgeous dam has a 2 year old on offer as well, 244L**
- **Outstanding candidate to breed your replacement heifers**

B2M, A consignment from Little B Cattle Co. (10 year old Gunner Benson)

Shane and Amanda's son Gunner has a burning passion for raising cattle and living the farm life. He loves to help care for the animals and would rather help out with daily chores than go to school. B2M sells as Gunner's contribution to our bull sale this year.



B2M LITTLE B CROSSFIRE 2M

SGLB 2M 2407158 February 22 2024

BAR-H CROSSFIRE 63A
HF CROSSFIRE 280D
HF RUBY 10B

YOUNG DALE YOHAN 18E
YOUNG DALE GINKS 36G
LLB JEMINA 0334E

GRASS ROOTS CROSSFIRE 106

LITTLE B TIBBIE 1K

COLEMAN CHARLO 0256
S A V MADAME PRIDE 8134
S A V MADAME PRIDE 6660

ANCHOR 1 WHO'S THAT 9C
ANCHOR 1 TIBBIE 223H
SCC TIBBIE 42A

| EPD | BW | WW | YW | MILK | CE | MCE | CE Score | BW | Adj WW | Adj YW |
|-----|----|----|----|------|----|-----|----------|----|--------|--------|
| | - | - | - | - | - | - | ★★★★ | 72 | - | - |

- **B2M is a proud postured, highly attractive Crossfire son**
- Dam is a sweet made feminine Ginks daughter with a nice balanced udder
- **B2M will sire easy to market cattle and will excel in any program**
- **Outstanding heifer bull prospect from Little B Cattle Co**



2024 Sale Customers



Our Farm Employee Thank you!!

Anchor 1 would like to send out a very special THANK YOU to everyone that helps us get ready for SALE DAY!! Without our amazing crew it would not be possible. HUGE thanks to Alexcene, Joe, Xandra, Emily, Cole, Cory, Keagan, Jordan, Tyler and Tayden. To our main hands, your dedication and hard work are greatly appreciated, and to everyone else, we are grateful for your flexibility and support, you are always there to help out when we need it most! Not only do we have the BEST group working on our animals, we are blessed to have the most amazing kitchen crew as well! We are truly THANKFUL to our friends and family who help us to prepare food and feed everyone. Auntie Sheila and Auntie Connie make the yummy sweets, Trent is our go to guy in the kitchen, Auntie Marie, Auntie Lynne, Bob, Bernice, Debbie, Trisha and anyone else who pitches in to help feed our customers, please know how much we appreciate you. We are beyond blessed and SO lucky to have all of you in our lives! We truly could not do this without you!



Family





† **46L** **RED ANCHOR 1 HEADSTRONG 46L**
 RKKG 46L 2320731 February 6 2023

RED U2 HEAD GAMES 330E RED RSL MOONSHINE 207D
 RED U2 HEADSTRONG 273G RED YCLC MOONSHINE 55F
 RED U-2 MISTY 350C RED YCLC KURUBA 849D

RED RAINBOW HEADSTRONG 65J **RED ANCHOR 1 ERELITE 38J**
 RED KBJ MAUI 917B RED ANCHOR 1 TENACIOUS 99C
 RED HAZEL BLUFF MELTE 105E RED ANCHOR 1 ERELITE 239G
 RED HAZEL BLUFF MELTE 18C RED ANCHOR 1 ERELITE 93U

| EPD | BW | WW | YW | MILK | CE | MCE | CE Score | BW | Adj WW | Adj YW |
|-----|------|----|----|------|------|------|----------|----|--------|--------|
| | -1.8 | 48 | 80 | 24 | 12.0 | 10.0 | ★ ★ ★ | 68 | 679 | n/a |

- **Very fancy heifer bull prospect from Headstrong**
- 46L is solid red with an eye catching dark face that will turn heads on sale day
- **Feature 2 year old bull that is put together brilliantly from the ground up**
- **Elite 3 star calving ease prospect**



† **66L** **RED ANCHOR 1 HEADSTRONG 66L**
 RKKG 66L 2320755 February 08 2023

RED U2 HEAD GAMES 330E RED BRYLOR RED KODIAK 3A
 RED U2 HEADSTRONG 273G RED ANCHOR 1 KODIAK 86E
 RED U-2 MISTY 350C RED CROWFOOT STRETCH 4320P

RED RAINBOW HEADSTRONG 65J **RED ANCHOR 1 ROSSETTE 258J**
 RED KBJ MAUI 917B RED ANCHOR 1 IRONMAN 71U
 RED HAZEL BLUFF MELTE 105E RED ANCHOR 1 ROSSETTE 145Z
 RED HAZEL BLUFF MELTE 18C RED ANCHOR 1 ROSSETTE 201X

| EPD | BW | WW | YW | MILK | CE | MCE | CE Score | BW | Adj WW | Adj YW |
|-----|----|----|----|------|----|-----|----------|----|--------|--------|
| | 0 | 50 | 82 | 25 | 7 | 6 | ★ ★ ★ | 78 | 695 | 957 |

- **A Headstrong son offering extra frame and performance**
- 66L is long as a train and has an athletic build to cover the pasture
- Smooth fronted and handsome
- **This 3 star calving ease prospect is recommended for heifers & cows**



† **85L** **RED ANCHOR 1 WORKING CLASS 85L**
 RKKG 85L 2320773 February 12 2023

RED U-2 RECKONING 149A ANCHOR 1 THOR 42A
 RED U2 BLUE COLLAR 295E ANCHOR 1 THOR 29D
 RED U-2 ANEXA 439A RED ANCHOR 1 SAM'S ICE 259B

RED U2Q WORKING CLASS 59H **RED ANCHOR 1 FLAMETTE 268H**
 RED U-2 RECON 192Y RED FINE LINE PACKER 20B
 RED U-2 MISTY 350C RED ANCHOR 1 FLAMETTE 121E
 RED U-2 MISTY 60Z RED ANCHOR 1 FLAMETTE 15Z

| EPD | BW | WW | YW | MILK | CE | MCE | CE Score | BW | Adj WW | Adj YW |
|-----|------|----|----|------|----|-----|----------|----|--------|--------|
| | -1.5 | 31 | 56 | 23 | 11 | 11 | ★ ★ ★ | 69 | 588 | 889 |

- **We are really excited with the direction our herd has been heading, and the outstanding new herd sires we have been fortunate to use over recent years**
- These 2 year old bulls display style, length and thickness throughout
- **Bombproof calving ease heifer bull from the snazzy Working Class sire**
- **Bid with confidence sale day if you are seeking a 2 year old heifer bull**

134L

ANCHOR 1 THOR 134L

RKKG 134L 2321160 February 22 2023

SOO LINE THOR 1085
ANCHOR 1 THOR 42A
HF TIBBIE 260Y

CONNELLY CONSENSUS 7229
HF RESOLUTION 18Z
WILBAR RUBY 955N

ANCHOR 1 THOR 49F

HF HEMI 151T
HF ROSEBUD 332Y
HF ROSEBUD 91U

ANCHOR 1 ERICA 252D

HF KODIAK 5R
HF ERICA 87Y
HF ERICA 55R

| EPD | BW | WW | YW | MILK | CE | MCE | CE Score | BW | Adj WW | Adj YW |
|-----|-----|----|----|------|----|-----|----------|----|--------|--------|
| | 1.3 | 37 | 57 | 20 | 5 | 7 | ★ | 89 | 669 | 908 |

- **Nearing the end of an era, 134L will be 1 of our last black Thor sons to ever sell in our program**
- **Thor 42A was a herd building, foundation sire to our black angus program**
- 134L is correct in every way and will sire highly marketable offspring
- **Physically, Structurally and Maternally a solid Choice for your next Herd Sire**



164L

RED ANCHOR 1 WORK CLASS 164L

RKKG 164L 2321197 February 25 2023

RED U-2 RECKONING 149A
RED U2 BLUE COLLAR 295E
RED U-2 ANEXA 439A

RED U-2 RECKONING 149A
RED U2 MERLOT 266F
RED U-2 MABEL 60A

RED U2Q WORKING CLASS 59H

RED U-2 RECON 192Y
RED U-2 MISTY 350C
RED U-2 MISTY 60Z

RED ANCHOR 1 FREY-EX 231H

RED TER-RON CORTEZ 85Y
RED ANCHOR 1 FREY-EX 45D
RED ANCHOR 1 FREY-EX 306Y

| EPD | BW | WW | YW | MILK | CE | MCE | CE Score | BW | Adj WW | Adj YW |
|-----|-----|----|----|------|----|-----|----------|----|--------|--------|
| | 1.7 | 36 | 53 | 26 | 0 | 4 | ★★★★ | 81 | 639 | 822 |

- **Rock solid contribution from Working Class**
- Cherry red, highly attractive bull that is really well balanced and complete
- **164L is suitable for use on heifers and cows**



171L

RED ANCHOR 1 HEADSTRONG 171L

RKKG 171L 2322913 February 26 2023

RED U2 HEAD GAMES 330E
RED U2 HEADSTRONG 273G
RED U-2 MISTY 350C

ANCHOR 1 THOR 42A
ANCHOR 1 THOR 29D
RED ANCHOR 1 SAM'S ICE 259B

RED RAINBOW HEADSTRONG 65J

RED KBJ MAUI 917B
RED HAZEL BLUFF MELTE 105E
RED HAZEL BLUFF MELTE 18C

ANCHOR 1 CANADIAN FAYE 120J

RED TER-RON CORTEZ 85Y
RED ANCHOR 1 CANADIAN FAYE 81D
RED ANCHOR 1 CANADIAN FAYE

| EPD | BW | WW | YW | MILK | CE | MCE | CE Score | BW | Adj WW | Adj YW |
|-----|------|----|----|------|----|-----|----------|----|--------|--------|
| | -2.9 | 38 | 67 | 21 | 14 | 11 | ★★★★ | 69 | 662 | 926 |

- **171L will likely lead off the 2 year olds on sale day**
- This fellow has always had a proud look to him and his profile will demand your attention
- Solid footed bull showcasing great length of body and a stylish front end
- **A true sale feature and a bull that we are beyond proud to offer for sale April 12th**
- **3 star calving ease prospect that could take your program to another level**





† 209L RED ANCHOR 1 WORK CLASS 209L

RKKG 209L 2323745 March 04 2023

RED U-2 RECKONING 149A
RED U2 BLUE COLLAR 295E
RED U-2 ANEXA 439A

RED U-2 RECKONING 149A
RED U2 MERLOT 266F
RED U-2 MABEL 60A

RED U2Q WORKING CLASS 59H

RED ANCHOR 1 ERELITE 178H

RED U-2 RECON 192Y
RED U-2 MISTY 350C
RED U-2 MISTY 60Z

RED BRYLOR RED KODIAK 3A
RED ANCHOR 1 ERELITE 41D
RED ANCHOR 1 ERELITE 93U

| EPD | BW | WW | YW | MILK | CE | MCE | CE Score | BW | Adj WW | Adj YW |
|-----|-----|----|----|------|----|-----|----------|----|--------|--------|
| | 0.7 | 36 | 57 | 27 | 4 | 6 | ★★★ | 74 | 637 | 884 |

- Working Class son with added length of body and frame
- 209L will help cover those females on pasture this summer
- Solid built bull marked with 3 stars for calving ease



† 212L ANCHOR 1 CROSSFIRE 212L

RKKG 212L 2323748 March 04 2023

BAR-H CROSSFIRE 63A
HF CROSSFIRE 280D
HF RUBY 10B

YOUNG DALE YOHAN 18E
YOUNG DALE GINKS 36G
LLB JEMINA 0334E

GRASS ROOTS CROSSFIRE 106

ANCHOR 1 TIBBIE 11J

COLEMAN CHARLO 0256
S A V MADAME PRIDE 8134
S A V MADAME PRIDE 6660

S A V SEEDSTOCK 4838
ANCHOR 1 TIBBIE 89G
HF TIBBIE 260Y

| EPD | BW | WW | YW | MILK | CE | MCE | CE Score | BW | Adj WW | Adj YW |
|-----|------|----|----|------|----|-----|----------|----|--------|--------|
| | -1.1 | 47 | 74 | 18 | 13 | 9 | ★★★ | 70 | 676 | 927 |

- Hands down our lead off black angus two year old bull on April 12th
- 212L is exactly what we strive to produce in our 2 year old program
- Long, deep, thick made and hairy would describe 212L
- A true herd bull prospect that would work well in any program
- Highly recommended for use on heifers or cows, 3 stars all the way



† 240L RED ANCHOR 1 WORK CLASS 240L

RKKG 240L 2323775 March 08 2023

RED U-2 RECKONING 149A
RED U2 BLUE COLLAR 295E
RED U-2 ANEXA 439A

RED BRYLOR RED KODIAK 3A
RED ANCHOR 1 KODIAK 53D
RED ANCHOR 1 FREYJA 3Y

RED U2Q WORKING CLASS 59H

RED ANCHOR 1 TARA 119G

RED U-2 RECON 192Y
RED U-2 MISTY 350C
RED U-2 MISTY 60Z

RED MCRAES VISION 50T
RED ANCHOR 1 TARA 1A
RED MAR MAC TARA 93Y

| EPD | BW | WW | YW | MILK | CE | MCE | CE Score | BW | Adj WW | Adj YW |
|-----|------|----|----|------|----|-----|----------|----|--------|--------|
| | -2.9 | 32 | 53 | 23 | 13 | 11 | ★★★ | 61 | 603 | 897 |

- Soggy, easy keeping Working Class soon with a great hair coat
- Backed by proven pedigree and unlimited calving ease
- A sleep through the night calving ease heifer bull option
- 240 L's calves will be born vigorous and ready to perform

† 242L RED ANCHOR 1 MERLOT 242L

RKKG 242L 2323777 March 09 2023

RED U-2 RECON 192Y
RED U-2 RECKONING 149A
RED U-2 ANEXA 271Y

RED ROYAL K-C TAK'N CHARGE 04P
RED ANCHOR 1 IN CHARGE 29U
RED ROYAL BEULA 36N

RED U2 MERLOT 266F

RED MINBURN COPENHAGEN 3Y
RED U-2 MABEL 60A
RED U-2 MABEL 7061T

RED ANCHOR 1 SAMS STORMY 248C

RED ROYAL HI HO 73R
RED ANCHOR 1 SAMS STORMY 2W
RED ROYAL SAM'S STORMY 81C

| EPD | BW | WW | YW | MILK | CE | MCE | CE Score | BW | Adj WW | Adj YW |
|-----|----|----|----|------|----|-----|----------|----|--------|--------|
| | 2 | 43 | 73 | 21 | 0 | 6 | ★ | 92 | 736 | 1018 |

- A larger framed, stretchy 2 year old from the Merlot line
- 242L will get your cow herd serviced with ease
- Added performance means more pounds in the fall
- 242L could very well be your next herd bull



† 244L RED ANCHOR 1 MOONSHINE 244L

RKKG 244L 2323780 March 09 2023

RED SIX MILE MOONSHINE MAN
RED RSL MOONSHINE 207D
RED RSL BEATRICE 454X

RED CRCC BOOM 100N
RED BLAIR'S PHENOM 210W
RED SOUTHLAND LAVAGIRL 54R

RED YCLC MOONSHINE 55F

RED MRLA 128B
RED YCLC KURUBA 849D
RED YCLC KURUBA 618B

RED ANCHOR 1 ROSETTE 210A

RED BROWN CREEK VALUE 13P
RED ROYAL ROSETTE 1126T
RED ROYAL ROSETTE 62N

| EPD | BW | WW | YW | MILK | CE | MCE | CE Score | BW | Adj WW | Adj YW |
|-----|-----|----|----|------|----|-----|----------|----|--------|--------|
| | 1.3 | 31 | 52 | 22 | 6 | 10 | ★★★★ | 81 | 591 | 829 |

- Moonshine sons have been consistent sale toppers in our past years
- 244L is very attractive and smooth fronted with nice depth of body
- His dam 210A is a no miss beauty that loves to be scratched in the barnyard
- 244L would work very nicely on heifers & cows



† 252L ANCHOR 1 WHO'S THAT 252L

RKKG 252L 2323788 March 11 2023

HF TIGER 5T
HF WHO'S THAT 7A
HF LUCY 317Y

KR BULLSEYE 3451
ANCHOR 1 BULLSEYE 37C
HF ROSEBUD 19U

ANCHOR 1 WHO'S THAT 9C

DURALTA 429M REALIST 77R
HF FANTASY 364W
2HR FANTASY 43S

ANCHOR 1 VALENTINE 226E

HF RESOLUTION 18Z
ANCHOR 1 MISTYS VALENTINE 98B
HF MISTY'S VALENTINE 95Y

| EPD | BW | WW | YW | MILK | CE | MCE | CE Score | BW | Adj WW | Adj YW |
|-----|-----|----|----|------|----|-----|----------|----|--------|--------|
| | 2.9 | 42 | 81 | 17 | 3 | 7 | ★ | 95 | 694 | 952 |

- This Who's That son has a dominating herd boss swagger
- Long bodied, thick made and impressive, he will sire awesome calves
- Maternal greatness built into 252L
- Recommended for mature cows, this bull will prove to be a great breeder





† 268L RED ANCHOR 1 MERLOT 268L

RKKG 268L 2323805 March 15 2023

RED U-2 RECON 192Y
RED U-2 RECKONING 149A
RED U-2 ANEXA 271Y

BLACK BRYLOR KODIAK 204Y
RED BRYLOR RED KODIAK 3A
RED BRYLOR FAYETTE 40Y

RED U2 MERLOT 266F

RED MINBURN COPENHAGEN 3Y
RED U-2 MABEL 60A
RED U-2 MABEL 7061T

RED ANCHOR 1 ENECHOR 40E

RED CFCC 22K
CROWFOOT ENECHOR 5213R
CFCC 1801L

| EPD | BW | WW | YW | MILK | CE | MCE | CE Score | BW | Adj WW | Adj YW |
|-----|-----|----|----|------|------|-----|----------|-----|--------|--------|
| | 4.1 | 57 | 93 | 26 | -4.0 | 4.0 | ★ | 104 | 817 | 1120 |

- **A true powerhouse & a highlight in our 2 year old pen**
- 268L is the longest and thickest made bull that we have on offer this year
- Don't let his 104 lbs birth weight scare you, He will calve just fine on mature cows
- **Length equals calving ease and 268L is a Train**
- **This could very well be the most impressive herd sire you have ever owned**



† 278L RED ANCHOR 1 MOONSHINE 278L

RKKG 278L 2407095 March 18 2023

RED SIX MILE MOONSHINE MAN
RED RSL MOONSHINE 207D
RED RSL BEATRICE 454X

RED SPRING CREEK HI HO 8K
RED ROYAL K-C DUKE 08R
RED ROYAL DUCHESS 08L

RED YCLC MOONSHINE 55F

RED MRLA 128B
RED YCLC KURUBA 849D
RED YCLC KURUBA 618B

RED ANCHOR 1 LAKME 83X

RED SSS HIGH MARK 272D
RED PIRO LAKME 118L
RED PIRO LAKME 923J

| EPD | BW | WW | YW | MILK | CE | MCE | CE Score | BW | Adj WW | Adj YW |
|-----|-----|----|----|------|-----|------|----------|----|--------|--------|
| | 0.4 | 33 | 54 | 22 | 7.5 | 10.0 | ★★★ | 81 | 682 | 1072 |

- **Unbelievable longevity in this bulls cow family**
- 278L will calve easy and make awesome daughters to grow your herd
- **Great choice to service heifers or cows**



† 290L RED ANCHOR 1 MOONSHINE 290L

RKKG 290L 2407096 March 21 2023

RED SIX MILE MOONSHINE MAN
RED RSL MOONSHINE 207D
RED RSL BEATRICE 454X

BLACK BRYLOR KODIAK 204Y
RED BRYLOR RED KODIAK 3A
RED BRYLOR FAYETTE 40Y

RED YCLC MOONSHINE 55F

RED MRLA 128B
RED YCLC KURUBA 849D
RED YCLC KURUBA 618B

RED ANCHOR 1 VERNICE 191C

RED LAZY MC HUSTLE 18T
RED ANCHOR 1 VERNICE 148Y
RED CROWFOOT VERNICE 4020P

| EPD | BW | WW | YW | MILK | CE | MCE | CE Score | BW | Adj WW | Adj YW |
|-----|-----|----|----|------|-----|-----|----------|----|--------|--------|
| | 0.2 | 47 | 74 | 23 | 7.5 | 7.5 | ★★★ | 82 | 608 | 825 |

- **We just can't get enough of these great Moonshine sons**
- 290L is a dark red, long and smooth bodied bull that we really like a lot
- Backed by a very consistent and productive cow family
- **Awesome choice to service heifers or cows**

292L

ANCHOR 1 THOR 292L

RKKG 292L 2383527 March 22 2023

SOO LINE THOR 1085
ANCHOR 1 THOR 42A
HF TIBBIE 260Y

HF KODIAK 5R
HF EL TIGRE 28U
HF ECHO 84R

ANCHOR 1 THOR 49F

HF HEMI 151T
HF ROSEBUD 332Y
HF ROSEBUD 91U

HF QUEENIE 270Y

HF MOST WANTED 46H
HF QUEENIE 101K
BIG BEAR QUEENIE 46X

| EPD | BW | WW | YW | MILK | CE | MCE | CE Score | BW | Adj WW | Adj YW |
|-----|-----|----|----|------|----|-----|----------|----|--------|--------|
| | 2.6 | 41 | 62 | 20 | 3 | 8 | ★ | 90 | 699 | 957 |

- **Dam is one of our very top black Angus cows on the ranch**
- 292L is a big masculine herd sire prospect with a proud posture
- **You will really appreciate the calf crop 292L leaves in his path**
- **Recommended for use on cows, collect all of the daughters from this bull**



303L

RED ANCHOR 1 MERLOT 303L

RKKG 303L 2348281 March 25 2023

RED U-2 RECON 192Y
RED U-2 RECKONING 149A
RED U-2 ANEXA 271Y

RED K-C ONE IRON 4P
RED ANCHOR 1 IRONMAN 71U
RED ROYAL SAM'S SIERRA 06R

RED U2 MERLOT 266F

RED MINBURN COPENHAGEN 3Y
RED U-2 MABEL 60A
RED U-2 MABEL 7061T

RED ANCHOR 1 VERNICE 237B

RED CROWFOOT OLE'S OSCAR 2042M
RED CROWFOOT VERNICE 4020P
RED CROWFOOT VERNICE 2050M

| EPD | BW | WW | YW | MILK | CE | MCE | CE Score | BW | Adj WW | Adj YW |
|-----|-----|----|----|------|----|-----|----------|----|--------|--------|
| | 2.7 | 29 | 58 | 25 | -2 | 4 | ★ | 94 | 687 | 955 |

- **Very attractive build and skull structure on this Merlot son**
- 303L is a structurally correct bull that will produce marketable offspring
- **A bull you will be proud to show your neighbours as he matures**
- **A highly recommended prospect for servicing your mature cow herd**



363L

ANCHOR 1 GINKS 363L

RKKG 363L 2407097 April 19 2023

YOUNG DALE CHALLENGER 2C
YOUNG DALE YOHAN 18E
YOUNG DALE GRACE 129C

SOO LINE THOR 1085
ANCHOR 1 THOR 42A
HF TIBBIE 260Y

YOUNG DALE GINKS 36G

PEAK DOT ELIMINATOR 765Z
LLB JEMINA 0334E
LLB JEMINA 688W

ANCHOR 1 TIBBIE 385G

HF RESOLUTION 18Z
ANCHOR 1 TIBBIE 141C
SCC TIBBIE 27U

| EPD | BW | WW | YW | MILK | CE | MCE | CE Score | BW | Adj WW | Adj YW |
|-----|------|----|----|------|------|------|----------|----|--------|--------|
| | -0.4 | 55 | 81 | 15 | 11.0 | 10.0 | ★★★ | 75 | 729 | 997 |

- **A heavy set and fleshy Ginks son that displays tremendous calving ease**
- 363L offspring will be good feeder cattle that gain and marble well
- **A lights out heifer bull backed by a fantastic weaning weight**
- **Ginks daughters have perfectly balanced udders and wonderful dispositions**





370L

ANCHOR 1 WHO'S THAT 370L

RKKG 370L 2407562 MAY 1 2023

HFTIGER 5T
HF WHO'S THAT 7A
HFLUCY 317Y

SANDY BAR ADVANTAGE 43M
HF KODIAK 5R
WILBAR RUBY 955N

ANCHOR 1 WHO'S THAT 9C

DURALTA 429M REALIST 77R
HF FANTASY 364W
2HR FANTASY 43S

HF ROSEBUD 33X

HF PROGRESS 20K
HF ROSEBUD 94P
HF ROSEBUD 198M

| EPD | BW | WW | YW | MILK | CE | MCE | CE Score | BW | Adj WW | Adj YW |
|-----|-----|----|----|------|-----|-----|----------|----|--------|--------|
| | 0.6 | 35 | 61 | 16 | 6.8 | 8.5 | ★★★ | 76 | 766 | 990 |

- Proud herd sire here with longevity built in his lineage
- 370L is as solid and predictable as you can make them
- Very multi functional bull that could work well in a mixed pasture of heifers & cows
- 3 star calving ease prospect with endless maternal potential

Committed to being an essential element in your crop production.

MCEWEN'S
FUELS & FERTILIZERS

Crop Inputs • Agronomy • Petroleums • Flaman Rentals

mcewens.ca f i x ag@mcewens.ca

WILLOW SPRINGS (Bios Access) 780-923-3902 • ATHABASCA - 780-675-9506 • BARRHEAD - 780-674-2146 • EVANSBURG 780-227-2148
 FORT SASKATCHEWAN - 780-998-2958 • LAMONT - 780-895-2282 • LEDUC 780-980-3212 • SMOKY LAKE - 780-654-3881
 STONY PLAIN 780-963-2878 • THORNTON - 780-358-3944 • WESTLOCK - 780-349-3223

The bull feeding program is built to maximize forage utilization, gut health and as a result quality sperm production. Nutritional status of a bull, particularly from the previous 60-days can affect the semen quality being ejaculated today. Sperm production is a continuous process and proper nutrition is critical to maintain peak fertility and longevity of bulls. Bull calves are generally developed on grass with their mom's on a quality mineral program.

Once bull calves are weaned, they are slowly moved onto a balanced TMR. The bulls are challenged with a forage-based TMR to help them develop and express their genetic potential. This is important for consistency of maturation and puberty of bull calves. Sampling and analyzing forages are important for properly balancing the overall ration.

Forage quality and digestibility are important for maximizing ruminal health. Matching suitable protein sources with proper starch with the available forage sources is key to promoting lean muscle growth. The addition of organic minerals are used to ensure proper immune function and overall health of bulls. All of these factors contribute to semen quality and conception within a herd.

If you have any questions about the nutrition program, please feel free to reach out. Buy with confidence knowing the bulls have been developed on a balanced nutrition program. *Best of luck on sale day!*

Justin Rosadiuk
Beef Consultant

(780) 902-0274
justin.rosadiuk@bullseyefeeds.ca

TRUSTED & PROVED

© More Than Just Food

Thank You to Our 2024 Buyers!! We Truly Appreciate Your Business !! Thank you so much!!

| | | | |
|----------------------|------------------------|----------------------|------------------------|
| Damon Jager * | Lyster Brothers * | George Dixon * | Neil Duffy |
| Darrell Hollands * | Art Wagner | Randy Schmidt *! | Andy Cloke *! |
| Greg Pearson | Al Starman | Kevin Wigley *! | Devin Tilma ! |
| Lee Wild * | Abel Farms | Curtis Hagman * | Meadowview Livestock * |
| Sheldon Sonnenberg * | Joe Howlett * | Vern Swaren *! | Murray Hartman * |
| Duane Erickson * | Danny Bray * | Circle J Farms | Mark Penchuk * |
| Dave Kay *! | Trevor Barnes * | Jim Jack * | Geoff Hunt |
| Curtis Werenka *! | Gary Seutter *! | Stephen Munt * | Tom Smith * |
| David Formanski *! | Dale Rizzoli *! | Jon Rutland | Gord Hartum * |
| Murray Sutherland *! | Brenda Dixon * | Lorraine Bartholow * | Dale Verbeek *! |
| Clarbyrn Farms Ltd * | Scott Dunstall * | Michael Ochran * | Dean Knudson * |
| Ralph Nay *! | Henry McKinnon * | Jeff Lloyd * | Lorne Chapotelle *! |
| Footprint Farms | Albert Maskowitz *! | Danny Homeak * | Pete Lowry |
| Ross Anderson * | Evan McPherson | Hoff Ranches * | John Patterson * |
| Robert Melnyk * | Ken Howlett *! | Kyle Hoefels * | Trevor Duke * |
| Starman Brothers * | Bar 3K Ranch | Mitchell McEwan * | Bo Fortin * |
| Connie Walker *! | Ray Shaw * | Aaron Dennison * | Y Coulee Land & Cattle |
| Joe Mychajlunow *! | Dale McQueen * | Todd Hinkle *! | Nick Kuzyk * |
| Maurice Bourgeois | Rod Kerr * | Aliston Machan | |
| Dedi Melzer *! | Cairns Land & Cattle * | Richard Haltiner | |

Denotes Repeat Customers *
Denotes Multiple Bulls Purchased !

High Selling Yearling - Abel Farms
High Selling 2 Year Old - Murray Sutherland

Special Thanks to our Heifer Customers: Ralph Nay, Madsen Farms, Dedi Melzer, Joe Howlett and Kerry Molzan.
Thank you so much for your support!





Can't make it to the sale? Internet Bidding Available.

To view this sale visit www.dlms.ca, Fill out the registration form located under registration and sign-up for your free user account and select a username and password.

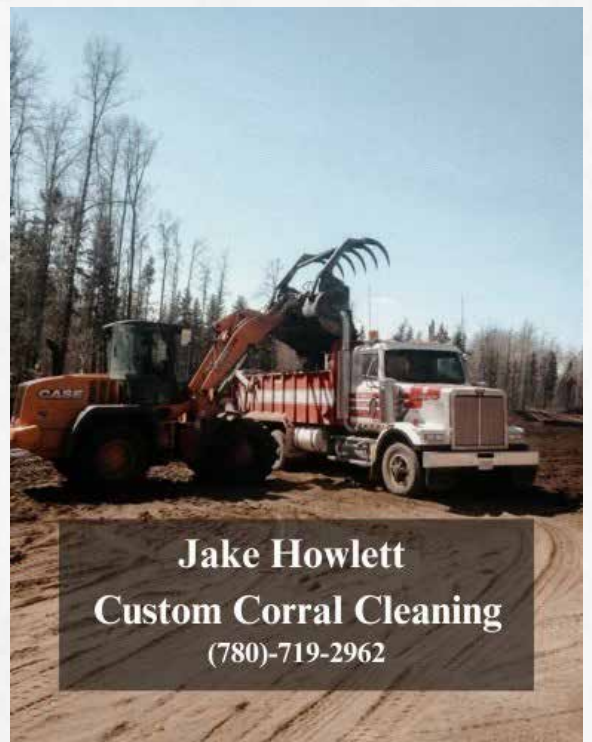
BIDDERS - To be approved as a bidder, Log in to dlms.ca and click BUYER APPROVAL tab, select the sale you are interested in bidding at and click sign up.

For more information

Call DLMS Reps:

Mark Shologan - 780-699-5082 or
DLMS Purebred Team 780.991-3025

DLMS
www.dlms.ca



Jake Howlett
Custom Corral Cleaning
(780)-719-2962



Terms & Conditions

TERMS The terms of the sale are cash or cheque payable at par at sale location unless satisfactory credit arrangements have been made previous to the sale. The right of property shall not pass until after settlement is made.

BID Every animal consigned to the sale must be sold by auction. No private sales will be allowed except as otherwise provided for in the terms and conditions. No by-bidding will be permitted. Each animal will be sold to the highest bidder.

DISPUTES In cases of disputes, bidding will be reopened between the parties involved. If no further bid is made the buyer will be the person from whom the auctioneer accepted the last bid. The auctioneer's decision in such matters will be final.

PURCHASER'S RISK Each animal becomes the risk of the purchaser as soon as sold. Animals will be cared for at the purchaser's risk for a reasonable time.

ANNOUNCEMENTS from the auction block will take precedence over printed matter in the catalogue. Buyers are therefore cautioned to pay attention to any such announcements.

CERTIFICATE OF REGISTRY The proper Registration or Recordation paper, as the case may be, will be duly transferred and furnished to the buyer for each animal after settlement has been made.

SHIPPING Assistance will be given in making shipment after the sale but no risk is assumed by Sales Management or Seller. Expenses incurred are the responsibility of the purchaser. Purchasers are requested to furnish shipping instructions when making settlement.

GUARANTEE All animals will carry standard breeding guarantee as specified by the Canadian Angus Association. At no time shall the seller's liability exceed the purchased price of the animal.

EXCEPTION TO GUARANTEE In cases where the animal is subjected to any hormonal or surgical reproduction techniques after the sale, the guarantee shall be null and void.

ACCIDENTS Although every precaution will be taken to protect the safety and comfort of buyers, neither the Sales Management, auctioneer, or Association assumes any responsibility in this matter and disclaims any liability legal or otherwise in the event of accident or loss of property.

RIGHTS AND OBLIGATIONS The above terms and conditions of the sale shall constitute a contract between the buyer and the seller and be equally binding to both. Resale of animals following purchase in this sale shall constitute a separate transaction and the rights and obligations of the two parties connected thereto are not covered by the terms and conditions of this sale.





Anchor 1 Angus
Box 1084
Mayerthorpe, AB
T0E 1N0



Anchor 1 ANGUS

18th Annual Bull Sale

